



Funded by
the European Union

RAISE

Research Analysis Identifier

Μεταβαίνοντας από τα ανοιχτά
δεδομένα στα δεδομένα ανοιχτά
προς επεξεργασία: το
παράδειγμα RAISE

Δέσποινα Πετσάνη
Mission Coordinator of RAISE

31^o Πανελλήνιο Συνέδριο
**Ακαδημαϊκών
Βιβλιοθηκών**

22-24 Οκτωβρίου 2025
Συνεδριακό Κέντρο Πανεπιστημίου Ιωαννίνων
"Κάρολος Παπούθης"

ΙΩΑΝΝΙΝΑ

Βιβλιοθήκη και Κέντρο Πληροφόρησης
Πανεπιστημίου Ιωαννίνων

raise-science.eu

Consortium

20

Partners

4.836.125€

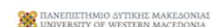
EU funding

10

Countries

40

Months



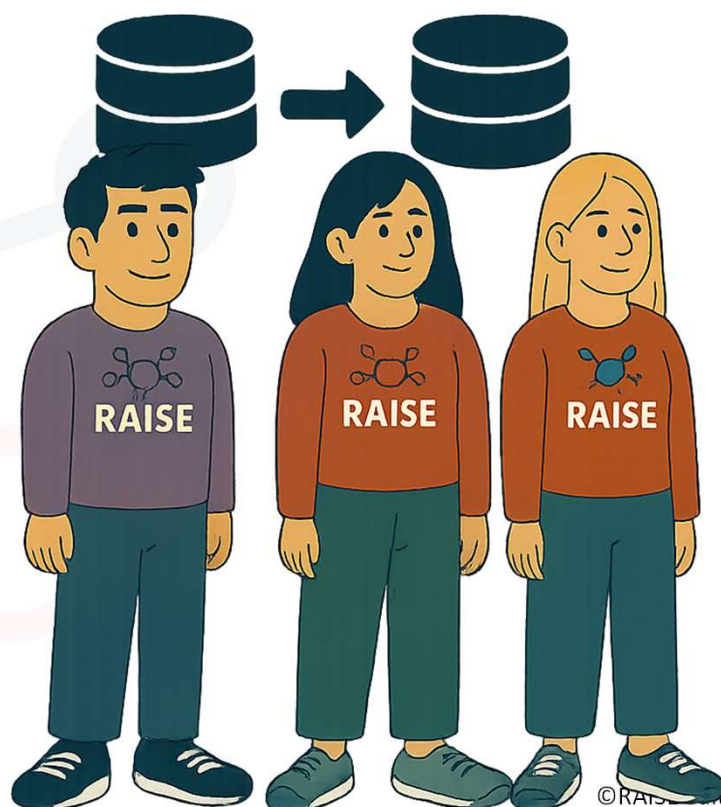
Access and Process Data with Trust!



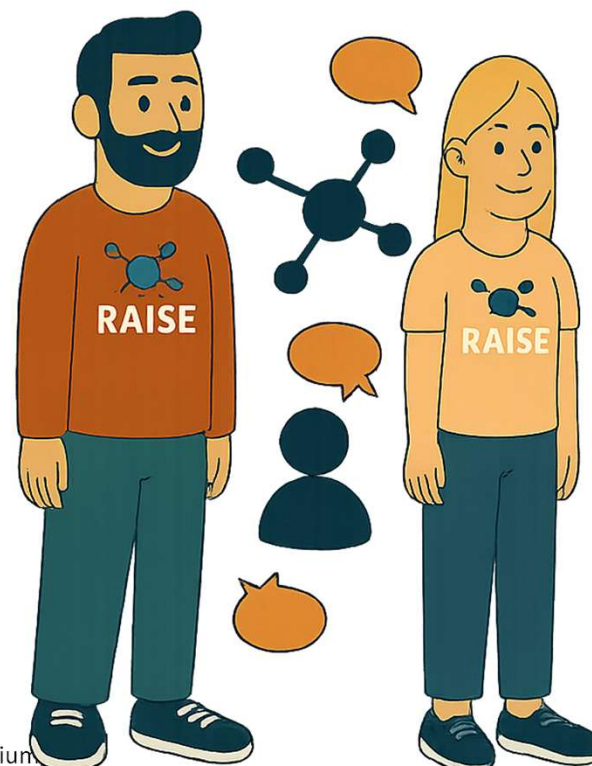
Funded by
the European Union

Data sharing and Data spaces democratization

DATA SHARING DEMOCRATIZATION




DATA SPACES DEMOCRATIZATION




© RAISE Consortium

Peer-to-Peer Home Renting Platforms

 Lets you offer homes
for rent

 **Guests**
Travelers book homes

RAISE

 Lets you give access to your
datasets **stored only** on your
premises

 **Visiting Algorithms**
Algorithms visit datasets

*Like Home Renting Platforms let you visit homes, RAISE allows your
algorithm to visit the data you need*

*Like Home Renting Platforms let you rent your home with trust, RAISE
enables your data to be processed by others with trust and control*

We designed **the peer-to-peer platform** for Research Data



**privacy
protection**



**ownership
accreditation**



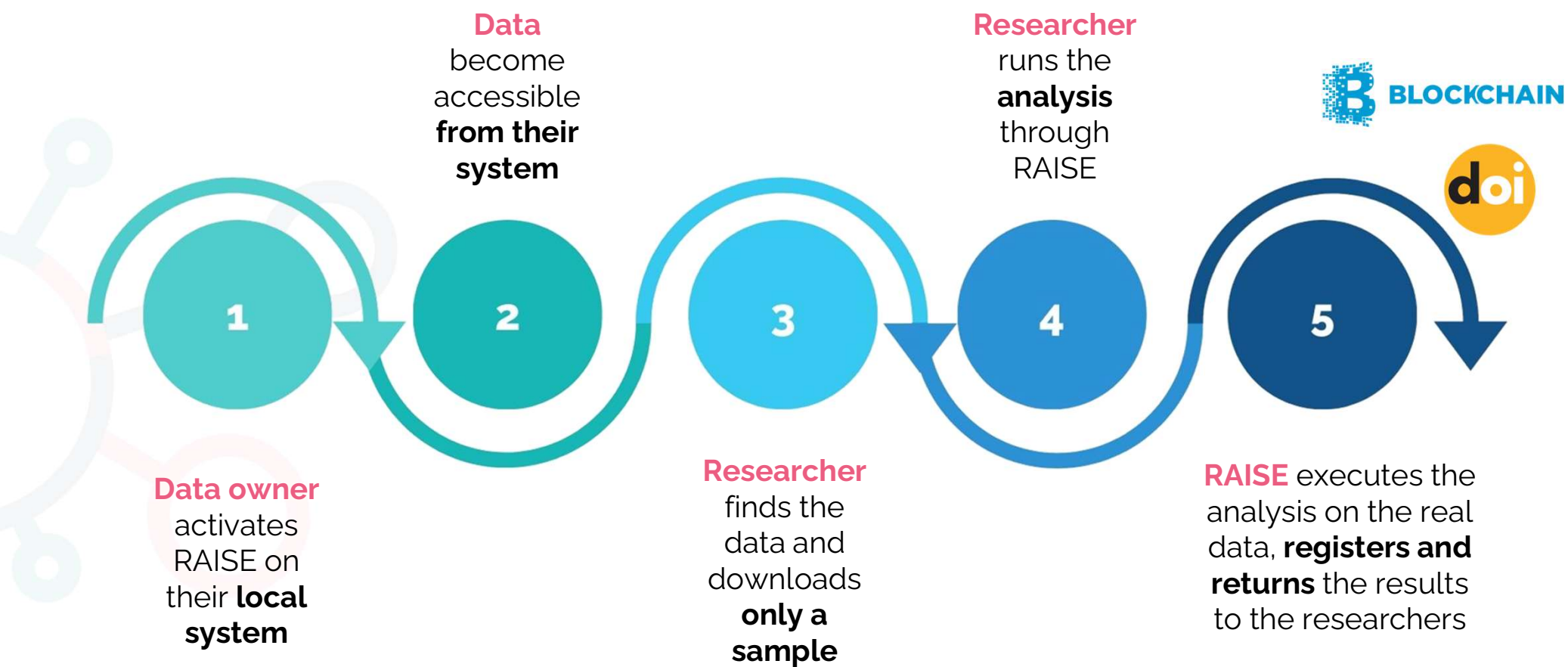
compliance



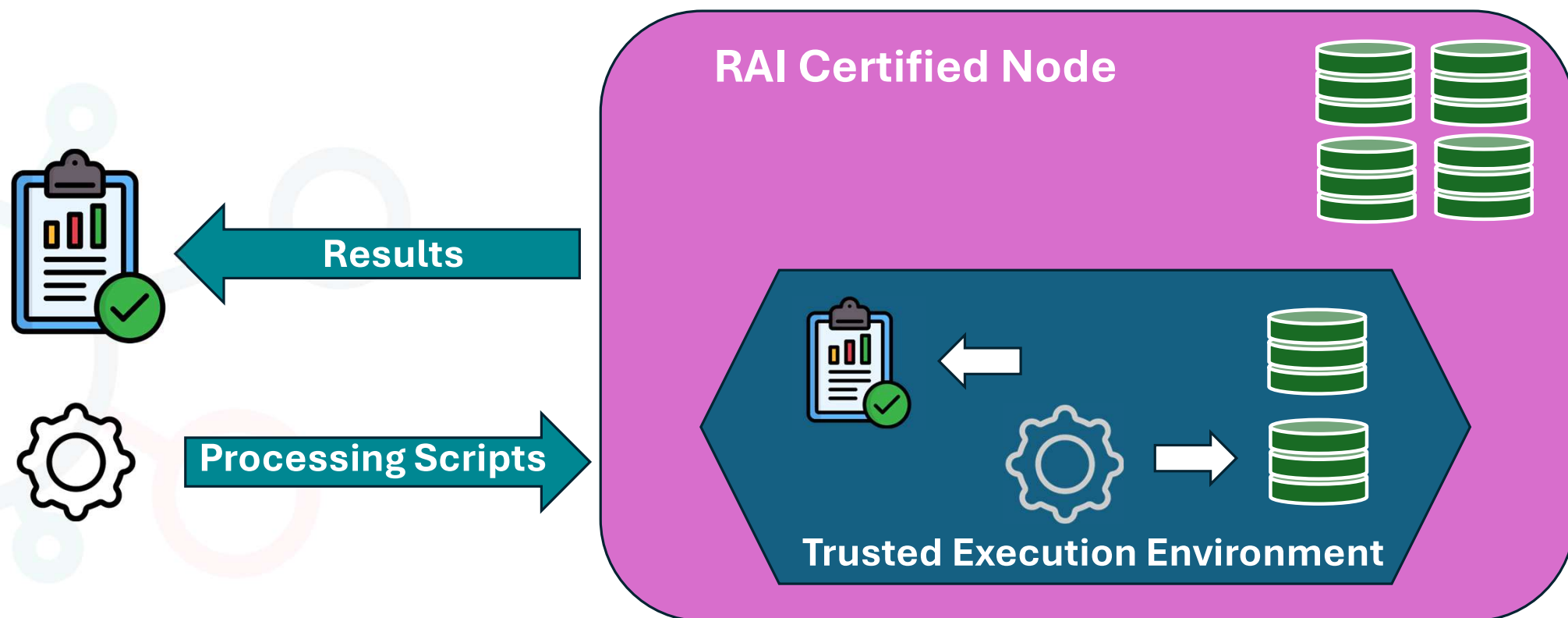
traceability

Trust through **Data Visiting**

DATA VISITING LIFE CYCLE



Trusted Execution Environment





Evdokimos Konstantinidis
evdokimosk@gmail.com



Dashboard



Dataset Marketplace



Dataset Access Requests



RAI Finder



This project has received funding
from the European Union's Horizon
2020 research and innovation
programme under grant agreement
No. 101007990

Dataset Marketplace

10 datasets

Here, you can view & request access to all available datasets

Search Datasets

Network Speed Week After Metro

Creator: HIT/ CERTH

Science · Dec 7, 2024 · English

Average speeds per link per direction in the city of Thessaloniki the week right after the launch of the Thessaloniki Metro (30/11/2024 to 8/12/2024 15:00). Format: LINK_ID: A numeric identifier for each road link, facilitating precise location mapping and analysis....

Details

Network Speed Week Before Metro

Creator: HIT / CERTH

Science · Dec 6, 2024 · English

Average speeds per link per direction in the city of Thessaloniki the week right before the launch of the Thessaloniki Metro (23-30/11/2024). Format: LINK_ID: A numeric identifier for each road link, facilitating precise location mapping and analysis. LINK_DIRECTION: An...

Details

Demo dataset url

Creator: Publisher

Science · Nov 20, 2024 · English

Dataset uploaded by a given url for RAISE demo

Details

EEG EDF Ale test

Creator: Alexandra Anagnostopoulou

Science · Feb 5, 2025 · English

EEG EDF Ale test

Details

← RAISE Consortium questionnaire (second year) v_3



Evdokimos Konstantinidis
evdokimosk@...



Dashboard



Datasets



Scripts



Experiments



Dataset Marketplace



Dataset Access Requests



RAI Finder

Konstantinidis, E., Epelde, G., Makridou, I., Tsimpita, K., Vasilopoulou, E., Hernandez, M., Athanasopoulos, N., Fernández, M., Bamidis, D., Katertsidis, N., Natsos, D., Nikolaidis, N., Symeonidis, A., Chatzigeorgiou, A., Kouris, I., Konstantinidis, G., Yumusak, S., Josep Maria, S. G., Dimos, T., ... Bamidis, P. (2025). *RAISE Consortium questionnaire (second year)*. <https://doi.org/21.T15999/raise/4>

Node

AUTH

Author

Evdokimos Konstantinidis

PID

21.T15999/raise/4



<http://doi.org/21.T15999/raise/4>



Download Results

Registered

Datasets Used in Experiment

RAISE Consortium questionnaire (second year)

Uploaded By

Evdokimos Konstantinidis



Details

Script Used in Experiment

RAISE Consortium questionnaire (second year) v_3

Uploaded By

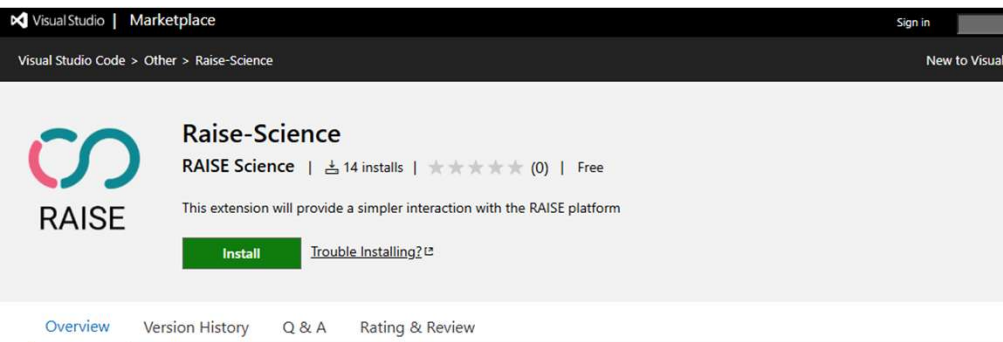
Evdokimos Konstantinidis



Details


This project has received funding from the European Union's Horizon 2020 research and innovation programme under grant agreement

IDE Plugins, SDKs, Libraries and APIs



Visual Studio | Marketplace

Visual Studio Code > Other > Raise-Science

 **Raise-Science**
RAISE Science | 14 installs | ★★★★★ (0) | Free

This extension will provide a simpler interaction with the RAISE platform

[Install](#) [Trouble Installing?](#)

[Overview](#) [Version History](#) [Q & A](#) [Rating & Review](#)

VSCode extension

For using in development environment, you can download the .vsix file from this repo [here](#).

And then from your VS Code, you can open the "Extensions" view (or Ctrl + Shift + X), select the three dots in the top right of the view, select the last option "Install from VSIX", and select the downloaded file.

Functionalities

- Download Sharable datasets
- Create initial Python file
- Add read function in Python file
- Upload and Execute experiment
- Usage of multiple datasets

Categories

Other

Tags

eosc open data science

Works with

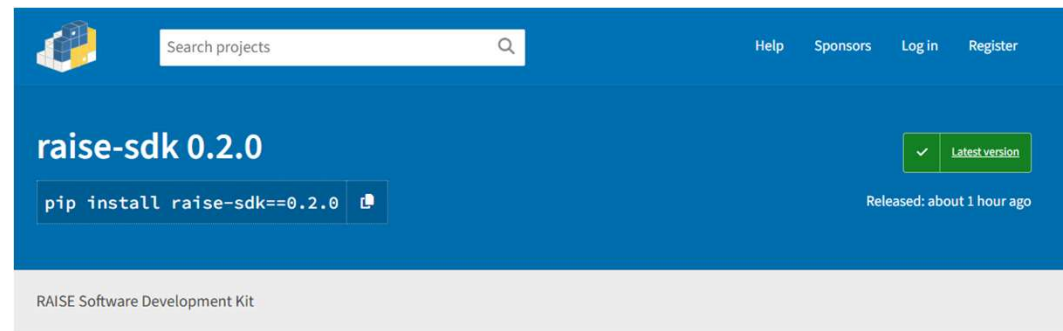
Universal

Resources

[License](#)
[Changelog](#)

More Info

Version 0.0.7



Search projects

Help Sponsors Log in Register

raise-sdk 0.2.0

[pip install raise-sdk==0.2.0](#) [Latest version](#)

Released: about 1 hour ago

RAISE Software Development Kit

Navigation

Project description

Release history

Download files

Verified details

These details have been verified by PyPI

Maintainers

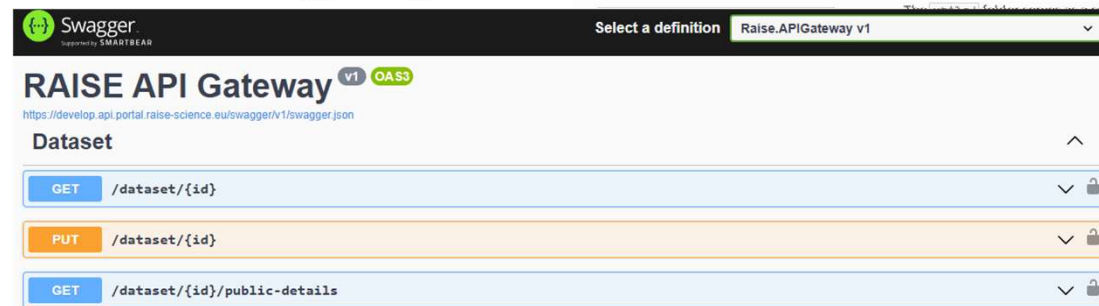
 raise-science

Project description

RAISE SDK

A software development kit for interacting with the core functionalities of the RAISE project. At the moment, it includes one submodule, [revo](#) (i.e. Remote Execution Validation Operations), and a [utils](#) folder.

- **REVO (Remote Execution Validation Operations)**
The REVO module is designed to implement the core functionalities of the RAI Processing Script Manager, enabling seamless execution and management of Python scripts for experiments. It is designed to automate key tasks such as managing dependencies, handling dataset selection, and running the main Python script, while also ensuring proper validation throughout the process. By integrating these features, REVO ensures that experiments are executed efficiently and with accurate logging, while validating the execution environment and providing detailed results for further analysis.
- **Utils**
The utils folder contains a collection of utility modules that provide reusable, convenient, and well-



Swagger
Supported by SMARTBEAR

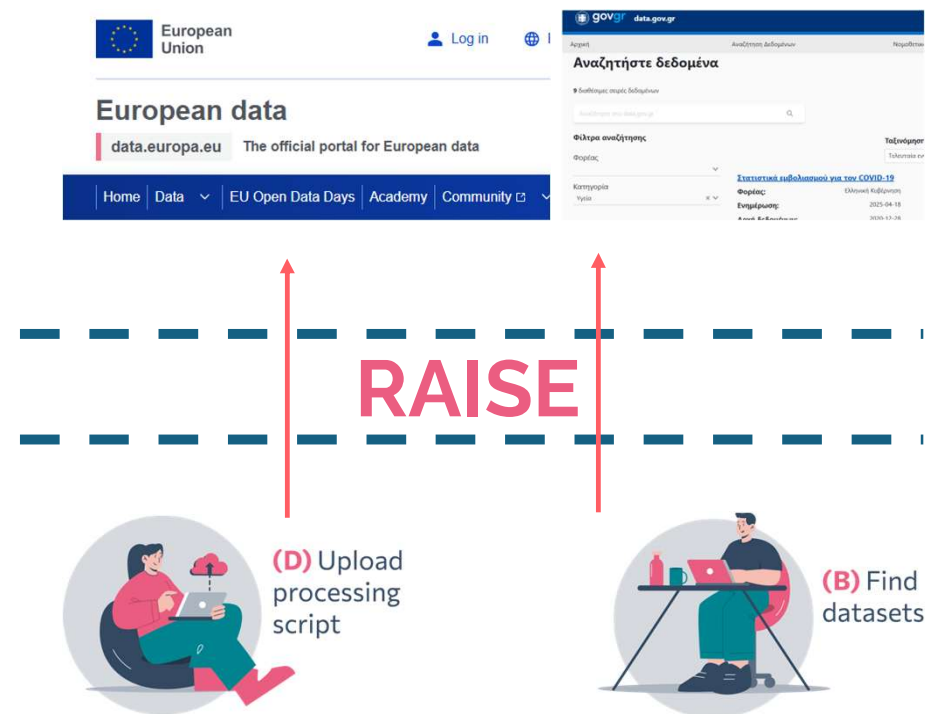
Select a definition **Raise.APIGateway v1**

RAISE API Gateway ^{v1} ^{OAS3}

<https://develop.api.portal.raise-science.eu/swagger/v1/swagger.json>

Dataset

GET	/dataset/{id}	✓	🔒
PUT	/dataset/{id}	✓	🔒
GET	/dataset/{id}/public-details	✓	🔒



The Aristotle University of Thessaloniki can provide storage to key stakeholders for providing access to their data

Measuring impact of the data

Dataset Trends



Access Requests **31**



Experiments **62**



Sample Downloads **Coming Soon**



Where to store my datasets



Upload your dataset to a **public certified node**

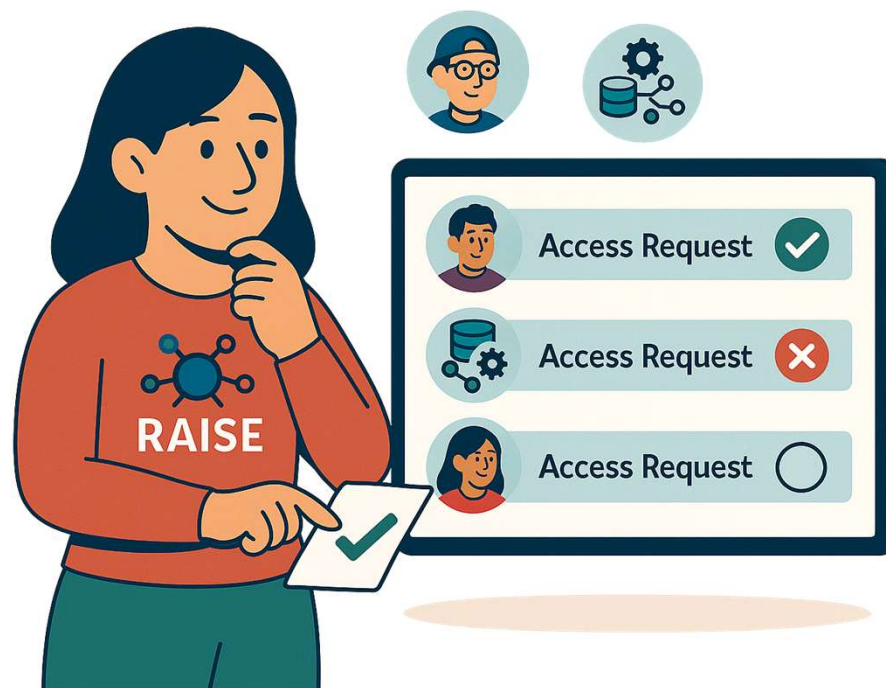


Deploy your **own node** at your premises.
Optionally, configure it as **private** so that only authorized users can store their datasets there

Who can process my datasets

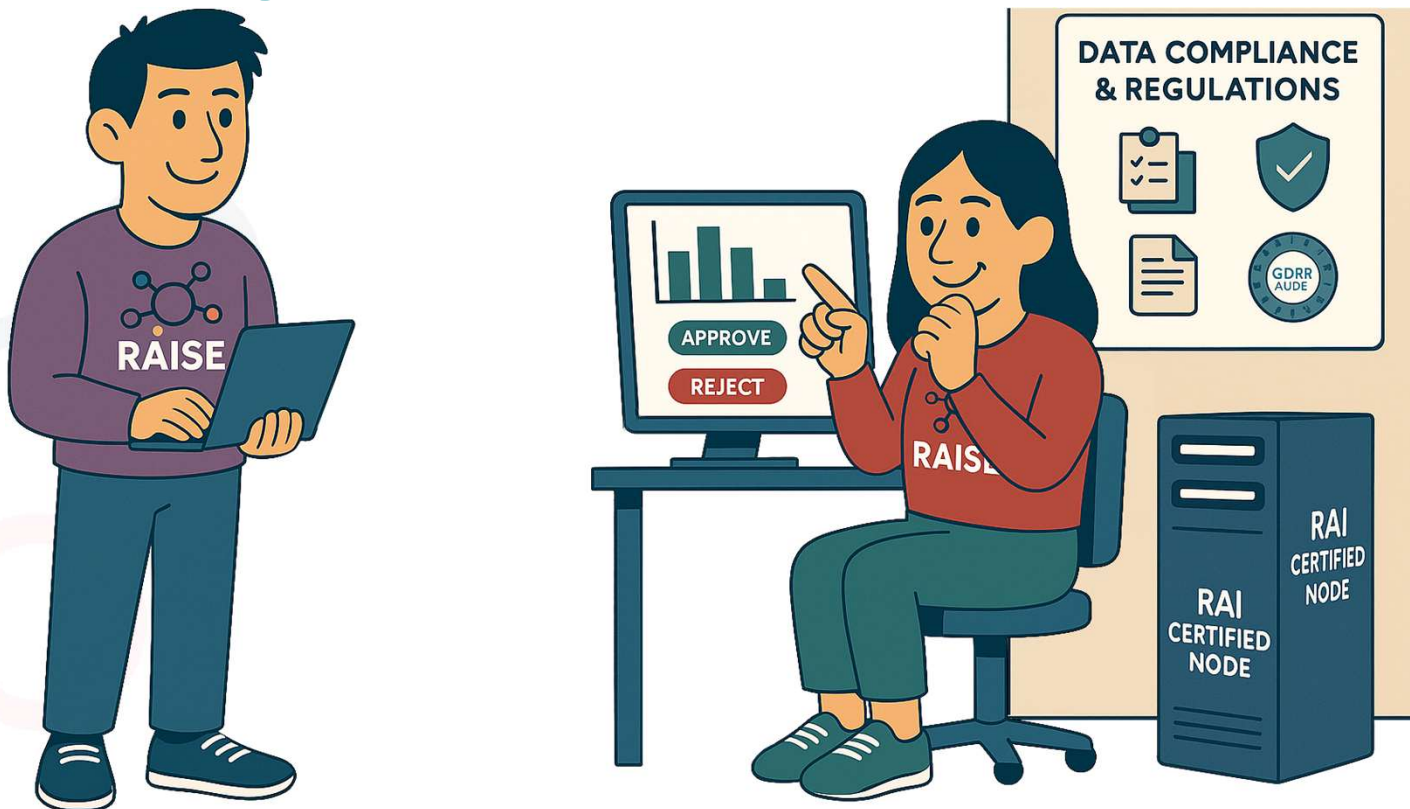


Allow all users to process your dataset, **knowing always who processed** them.
Optionally, you can deny access to any user.



Set your datasets to require **access request**.
Grant or deny access to the requests or even
change your decision at any time.

How can I make sure others cannot go against my principles or other regulations by processing my datasets?



Once the results produced, the data user does not have access to them until the **data owner audits and approves/rejects** them.

Is the code safe to be executed?

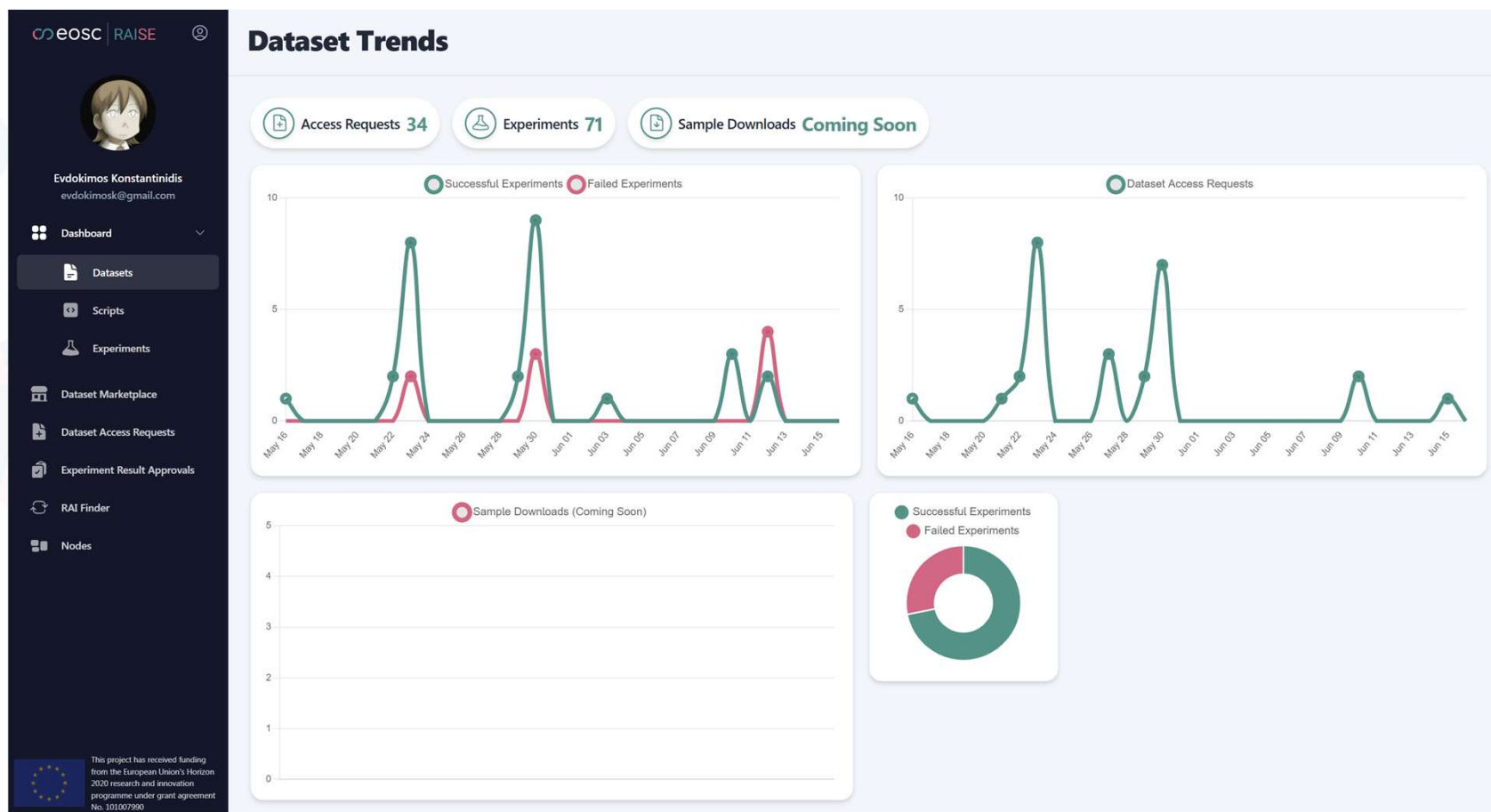


Static analysis before the **code** is executed. A short summary of what the code will do, along with potential hazardous actions are produced.



Apply the code on the shareable version of the dataset to audit the results and detect code execution anomalies.

I want to know the usages of my dataset.



We are live at **portal.raise-science.eu**



<https://documentation.raise-science.eu>





 info@raise-science.eu

 evdokimosk@gmail.com | evdokimosk@auth.gr

Contact Us

- Despoina Petsani
Lab of Medical Physics and Digital Innovation
- despoinapets@gmail.com

Online presence

-  <https://raise-science.eu/>
-  <https://twitter.com/RaiseScience>
-  <https://www.facebook.com/raise.science>
-  <https://www.linkedin.com/company/raise-science/>



Funded by
the European Union

Aristotle University of Thessaloniki (AUTH)

<https://www.auth.gr/en/>

<https://imedphys.med.auth.gr/>



info@raise-science.eu

Project coordinator:

Dr. Evdokimos Konstantinidis

Scientific coordinator

Prof. Panos Bamidis

Subscribe to our newsletter:

