

ΚΩΝΣΤΑΝΤΙΝΑ ΓΡΑΒΑΝΗ

ΑΝΑΓΛΥΦΟΙ ΣΚΥΦΟΙ ΑΠΟ ΤΗΝ ΚΑΣΣΩΠΗ

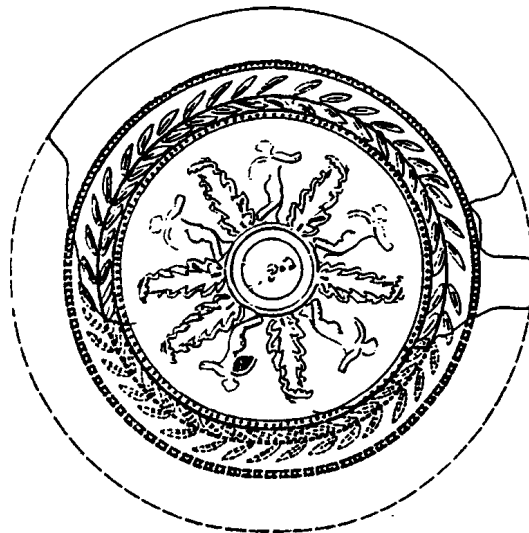
ΣΥΜΒΟΛΗ

ΣΤΗ ΜΕΛΕΤΗ ΤΗΣ ΕΛΛΗΝΙΣΤΙΚΗΣ ΚΕΡΑΜΙΚΗΣ ΑΠΟ ΤΗΝ ΗΠΕΙΡΟ

ΚΑΙ ΣΤΗΝ ΑΝΑΣΚΑΦΙΚΗ ΣΤΡΩΜΑΤΟΓΡΑΦΙΑ ΤΗΣ ΚΑΣΣΩΠΗΣ

ΤΟΜΟΣ Β

ΣΧΕΔΙΑ



ΔΙΔΑΚΤΟΡΙΚΗ ΔΙΑΤΡΙΒΗ

ΙΩΑΝΝΙΝΑ 1996



ΒΙΒΛΙΟΘΗΚΗ
ΠΑΝΕΠΙΣΤΗΜΙΟΥ ΙΩΑΝΝΙΝΩΝ



026000321703



ΚΩΝΣΤΑΝΤΙΝΑ ΓΡΑΒΑΝΗ

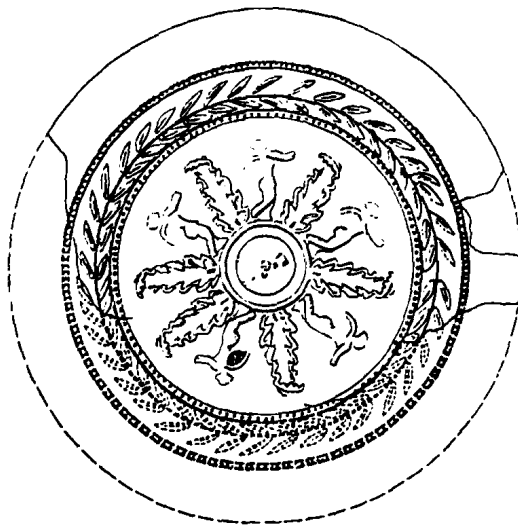
ΑΝΑΓΛΥΦΟΙ ΣΚΥΦΟΙ ΑΠΟ ΤΗΝ ΚΑΣΣΩΠΗ

ΣΥΜΒΟΛΗ

ΣΤΗ ΜΕΛΕΤΗ ΤΗΣ ΕΛΛΗΝΙΣΤΙΚΗΣ ΚΕΡΑΜΙΚΗΣ ΑΠΟ ΤΗΝ ΗΠΕΙΡΟ
ΚΑΙ ΣΤΗΝ ΑΝΑΣΚΑΦΙΚΗ ΣΤΡΩΜΑΤΟΓΡΑΦΙΑ ΤΗΣ ΚΑΣΣΩΠΗΣ

ΤΟΜΟΣ Β

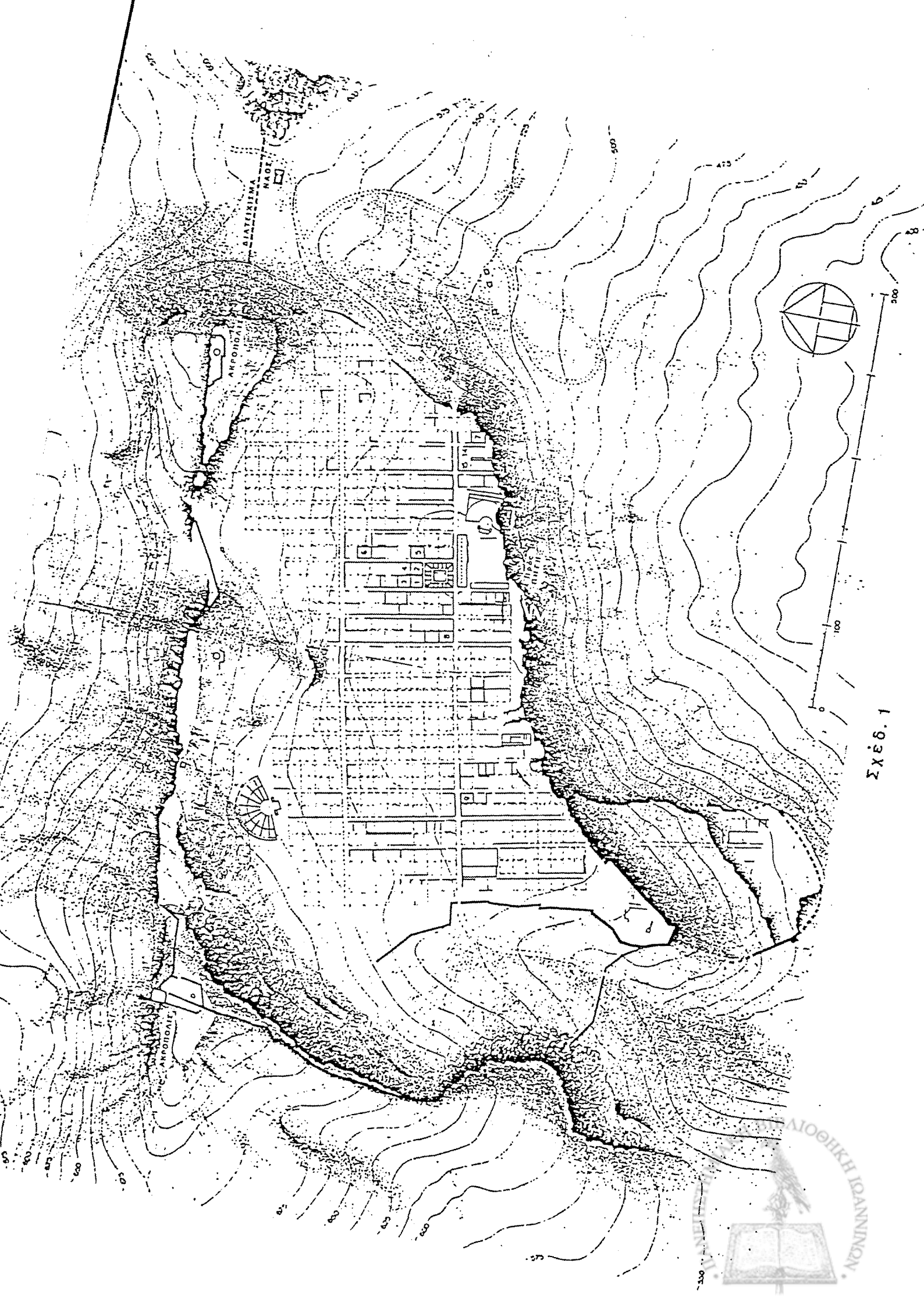
ΣΧΕΔΙΑ



ΔΙΔΑΚΤΟΡΙΚΗ ΔΙΑΤΡΙΒΗ

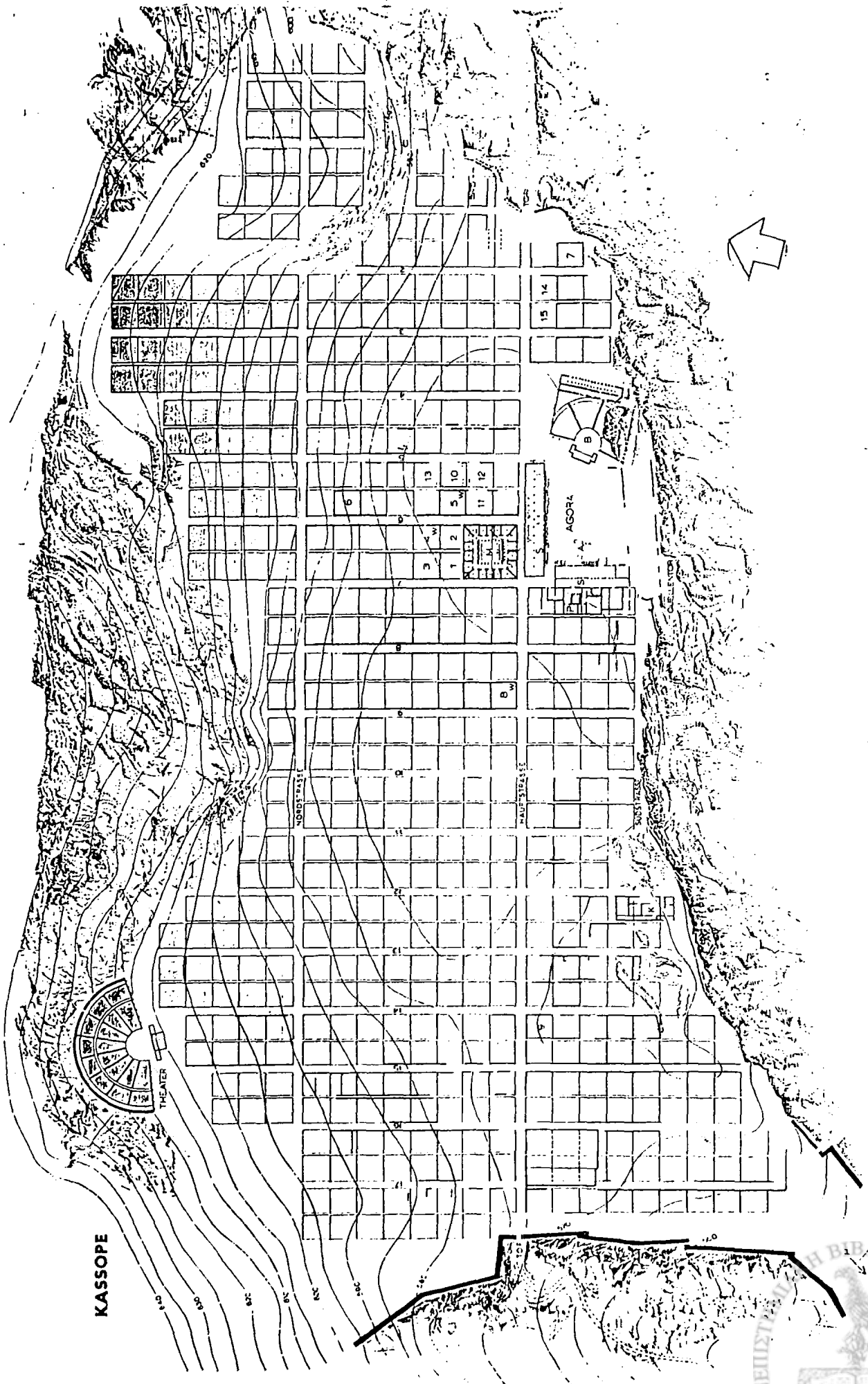
ΙΩΑΝΝΙΝΑ 1996





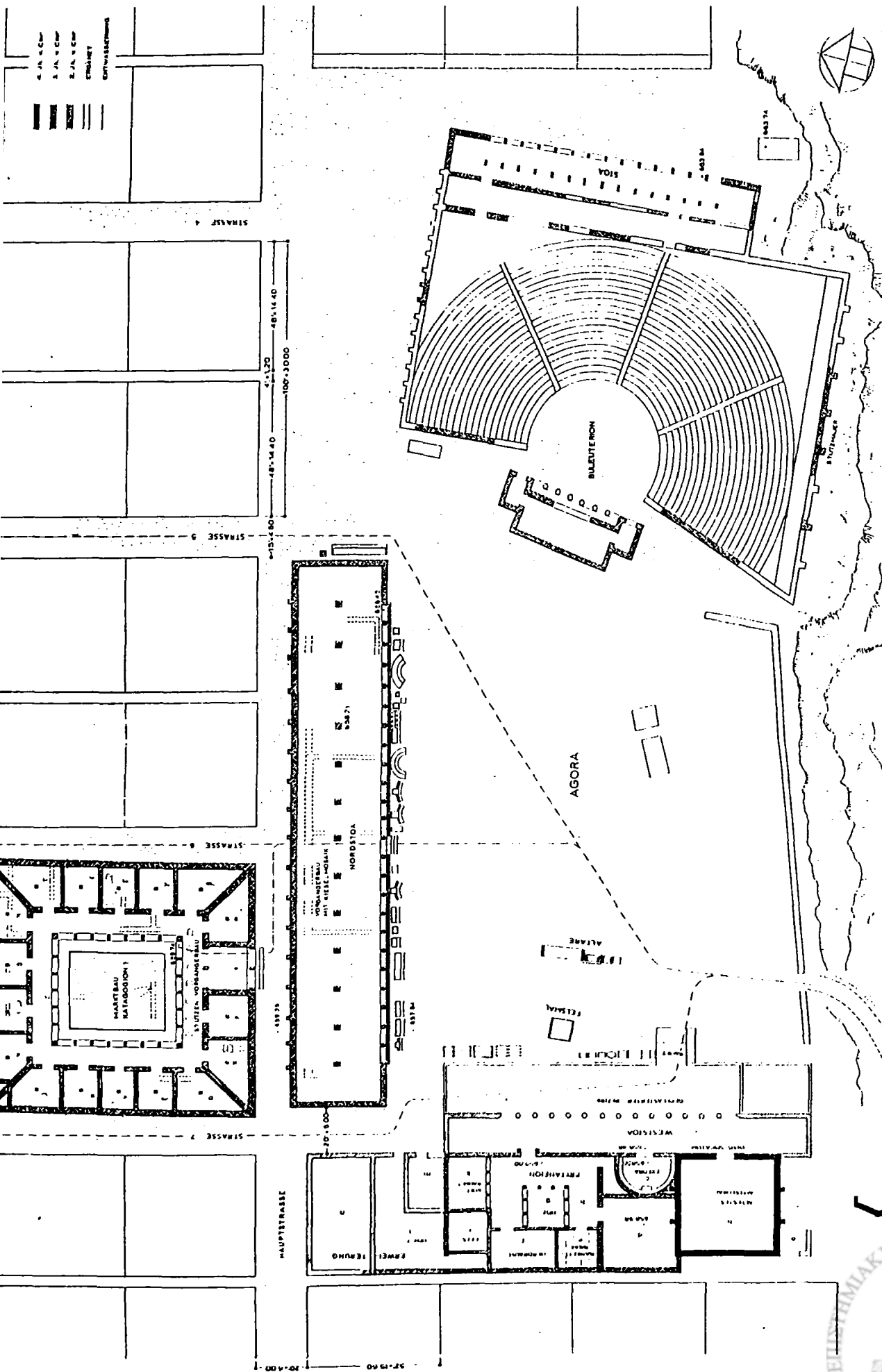
ΣΧΕΔ. 1





ΣΧΕΔ. 2



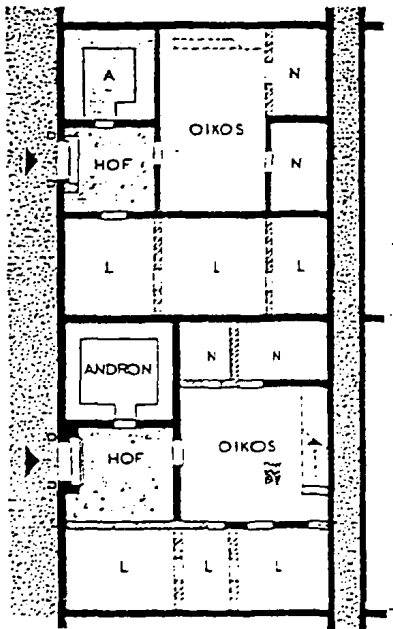


KASSOPE AGORA
 0 5 10 20 30 40 50 FUSS 0 10 20 30 40 50 METERS

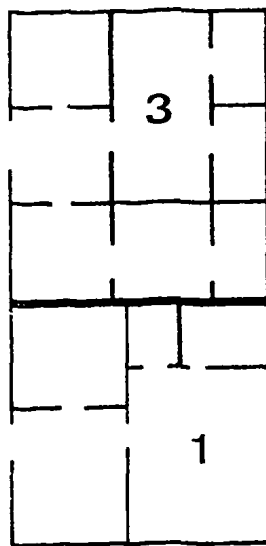
Σχέδ. 3



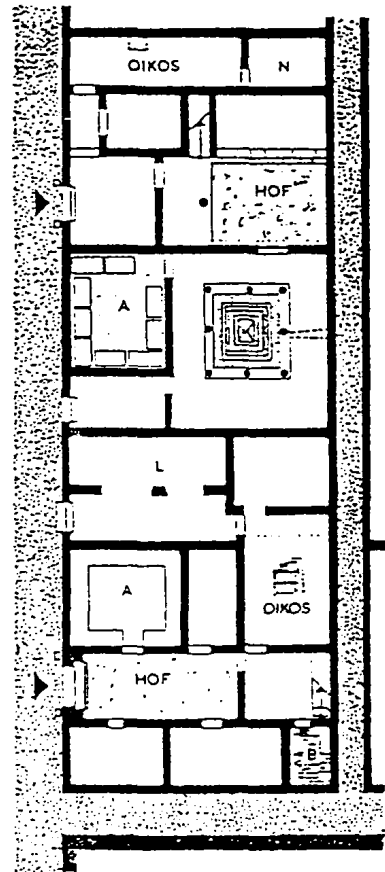
ΚΑΣΣΩΠΗ
Σπίτια 1 και 3



4α



4β



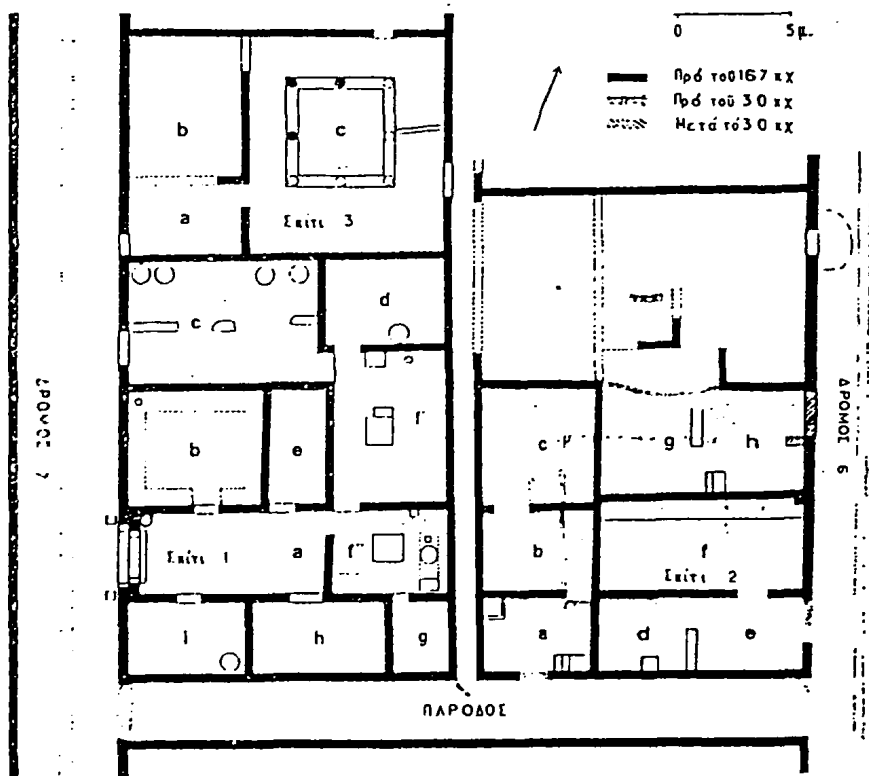
4γ

Σχέδ. 4α-γ



ΚΑΣΣΩΠΗ

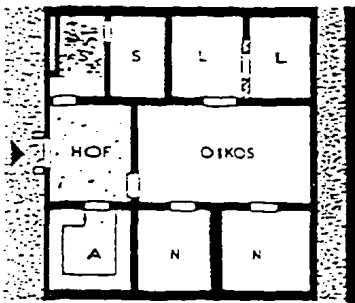
Σπίτια 1 και 2



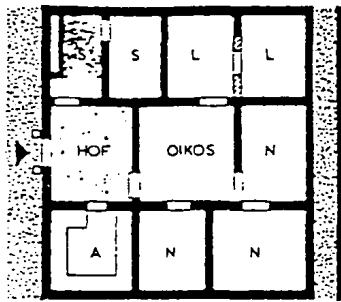
ΣΧΕΔ. 5



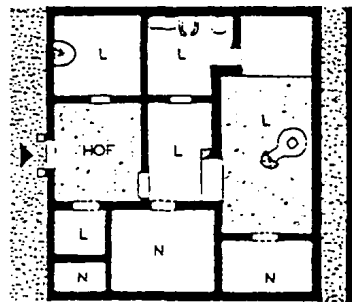
ΚΑΣΣΩΠΗ
 Σπίτι 5



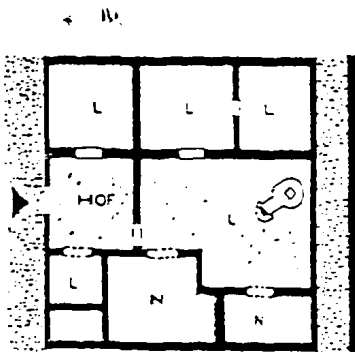
α



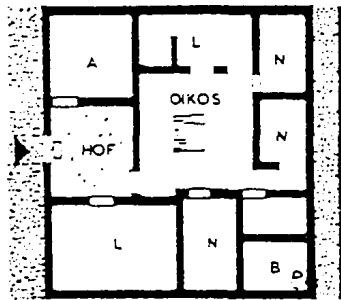
β



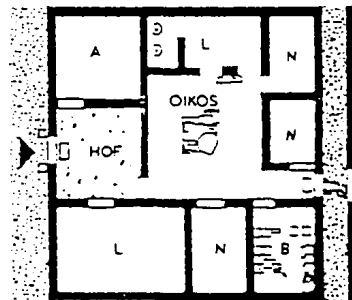
γ



δ



ε



στ

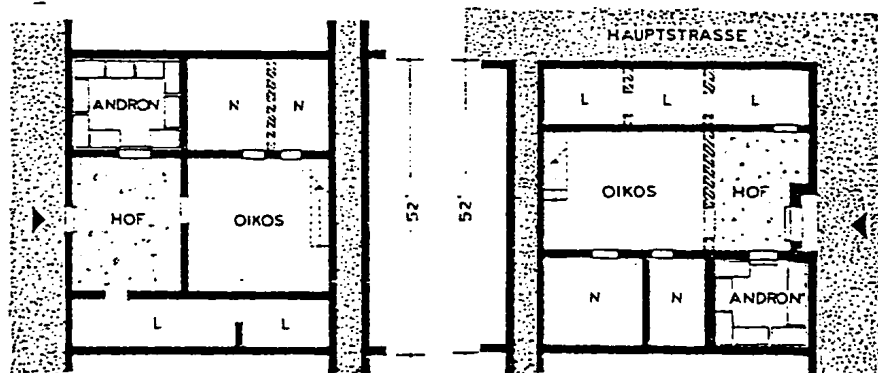
Σχέδ. 6 α-στ



ΚΑΣΣΩΠΗ

Σπίτι 6

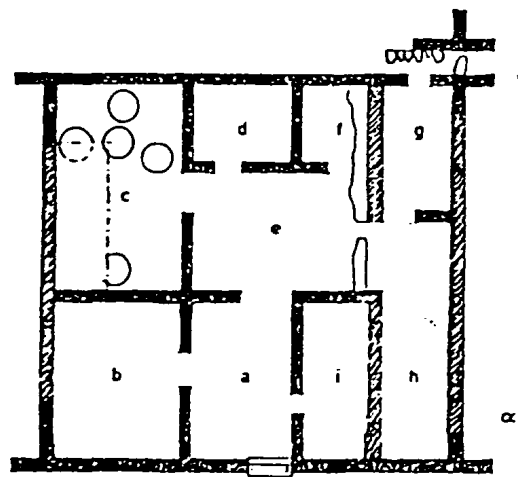
Σπίτι 14



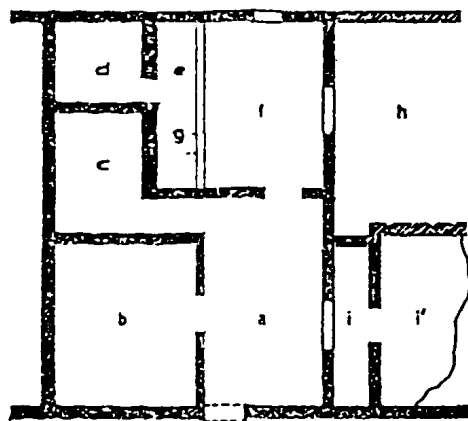
Σχέδ. 7



ΚΑΣΣΩΠΗ
Σπίτι 6

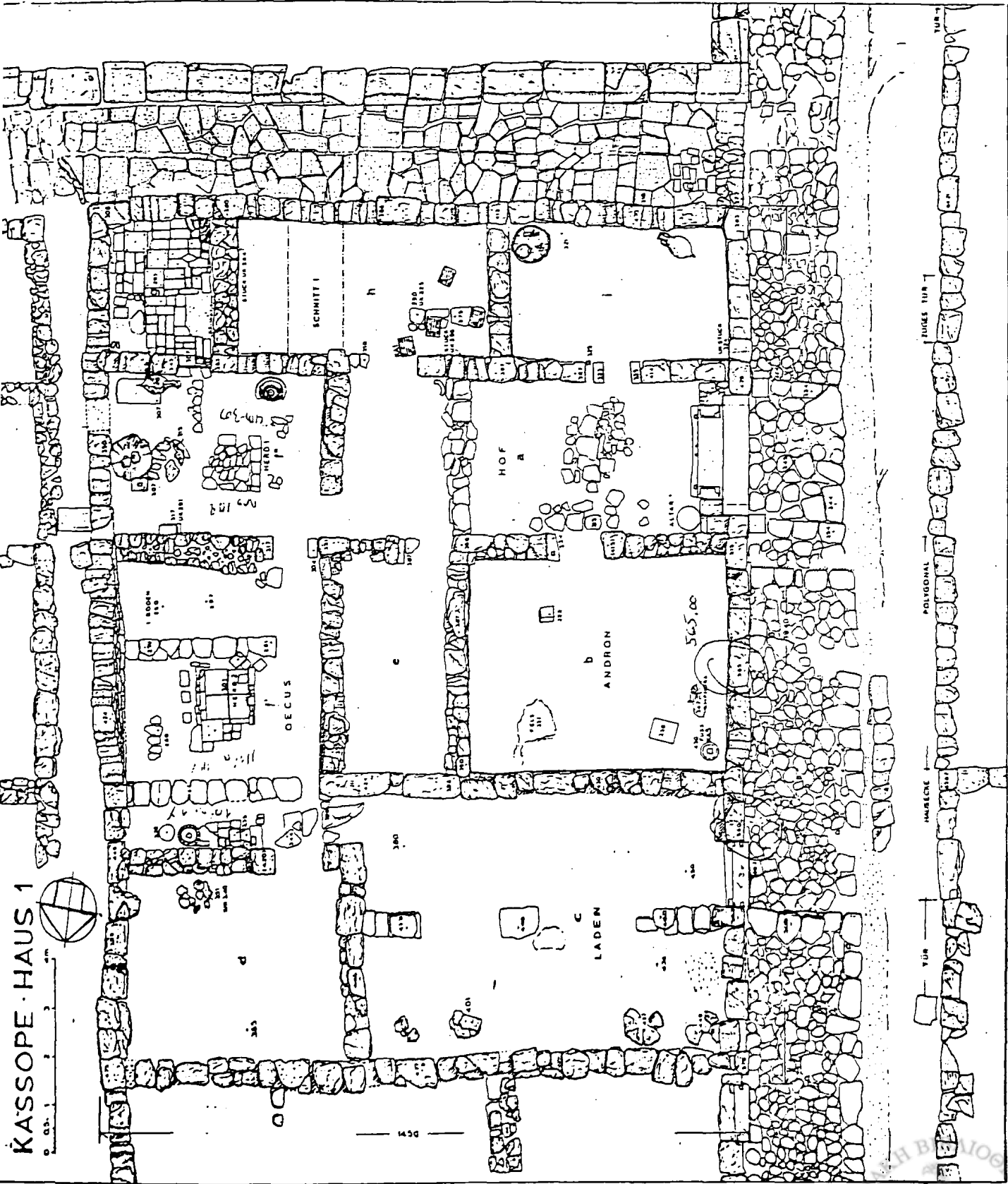


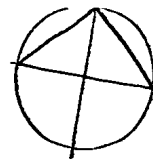
ΚΑΣΣΩΠΗ
Σπίτι 7



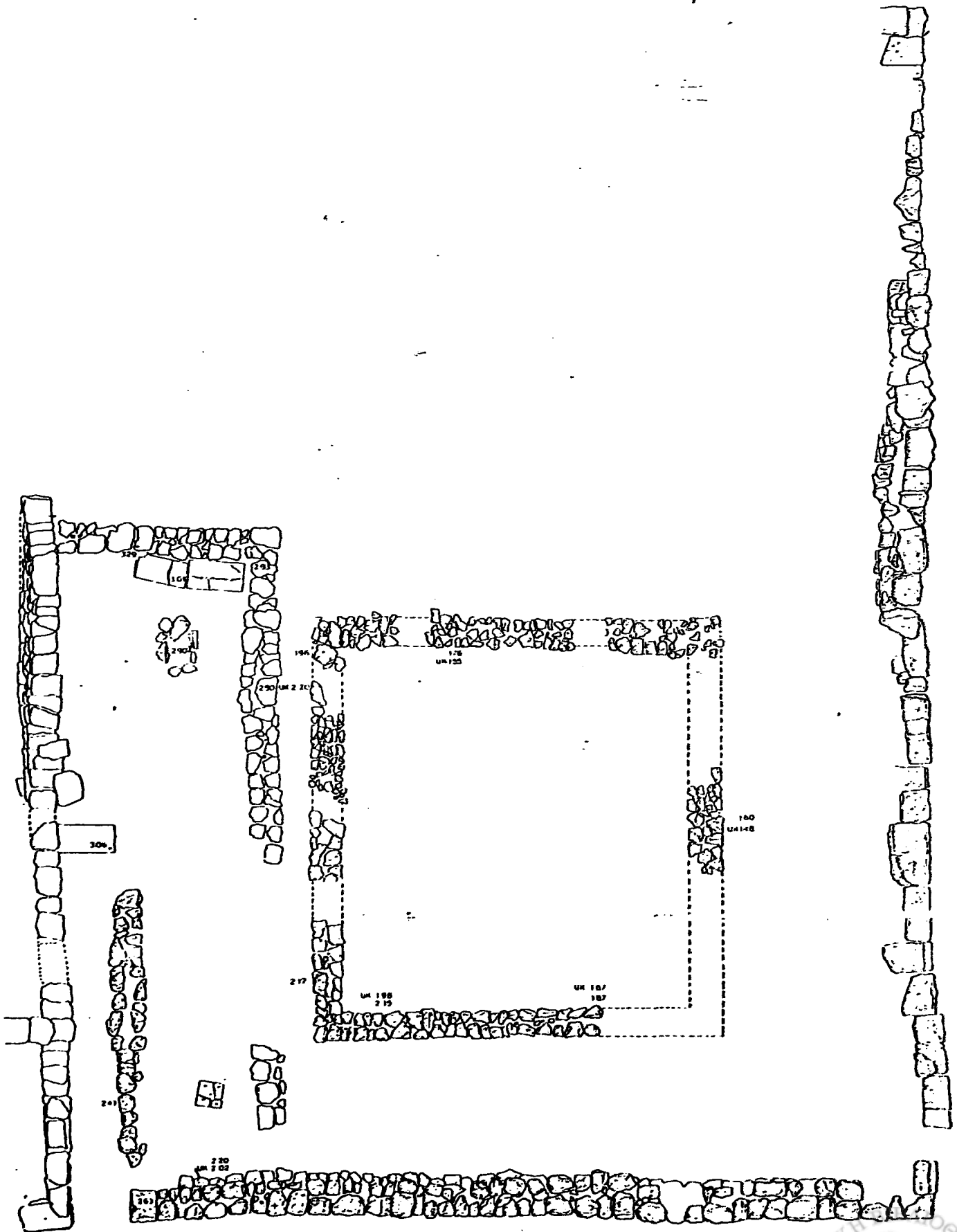
Σχέδ. 8







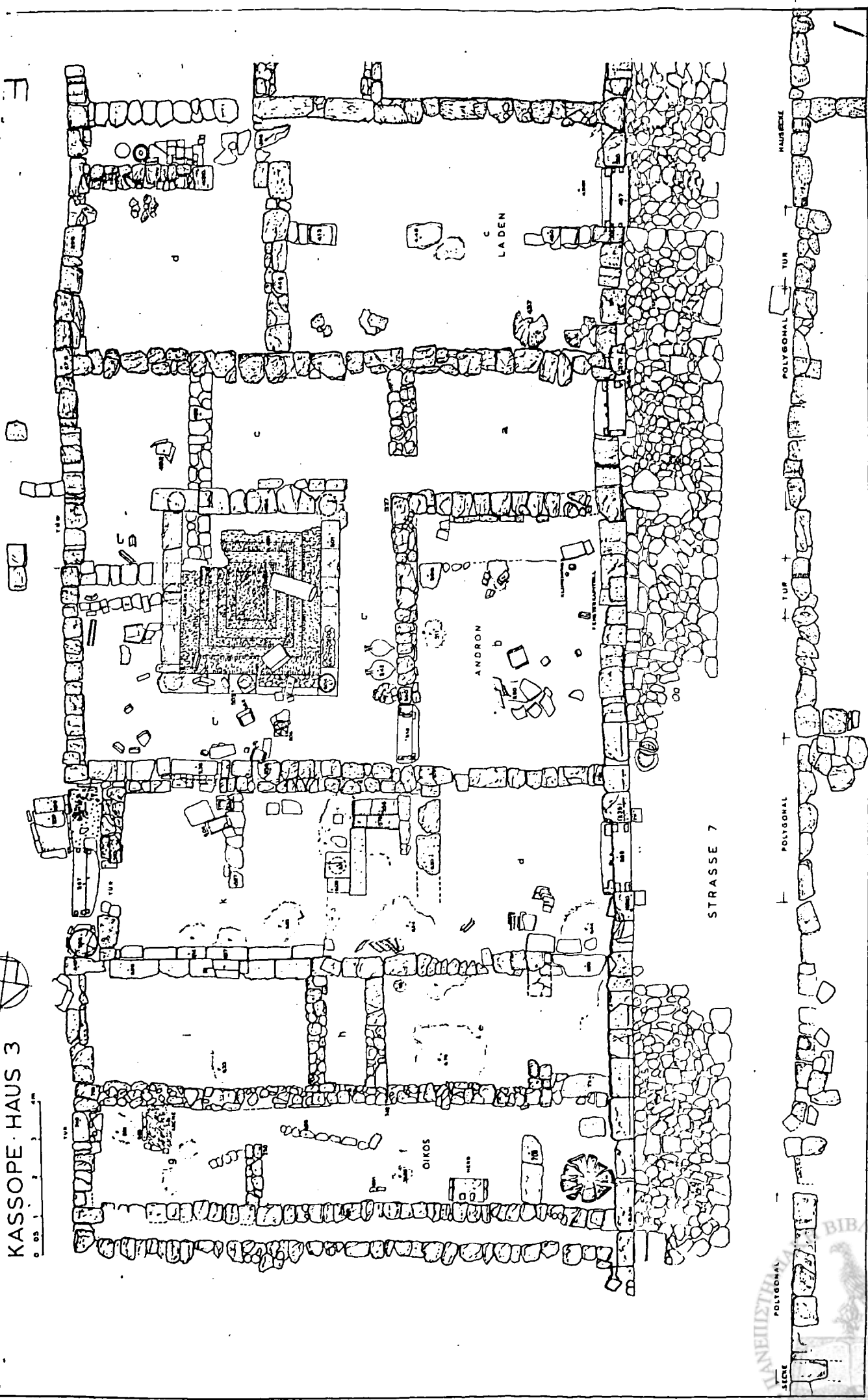
KASSOPE



Σχέδ. 10

KASSOPE HAUS 3

0 0.5 1 2 3 4 5



C
LADEN

ANDRON

OIKOS

STRASSE 7

ΠΑΝΕΠΙΣΤΗΜΙΟΝ
ΑΡΧΑΙΟΛΟΓΙΚΗ ΕΡΕΥΝΑ
ΣΕΚΕ

POLYGONAL

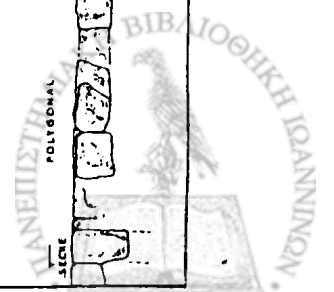
POLYGONAL

TUR

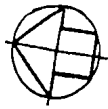
TUR

POLYGONAL

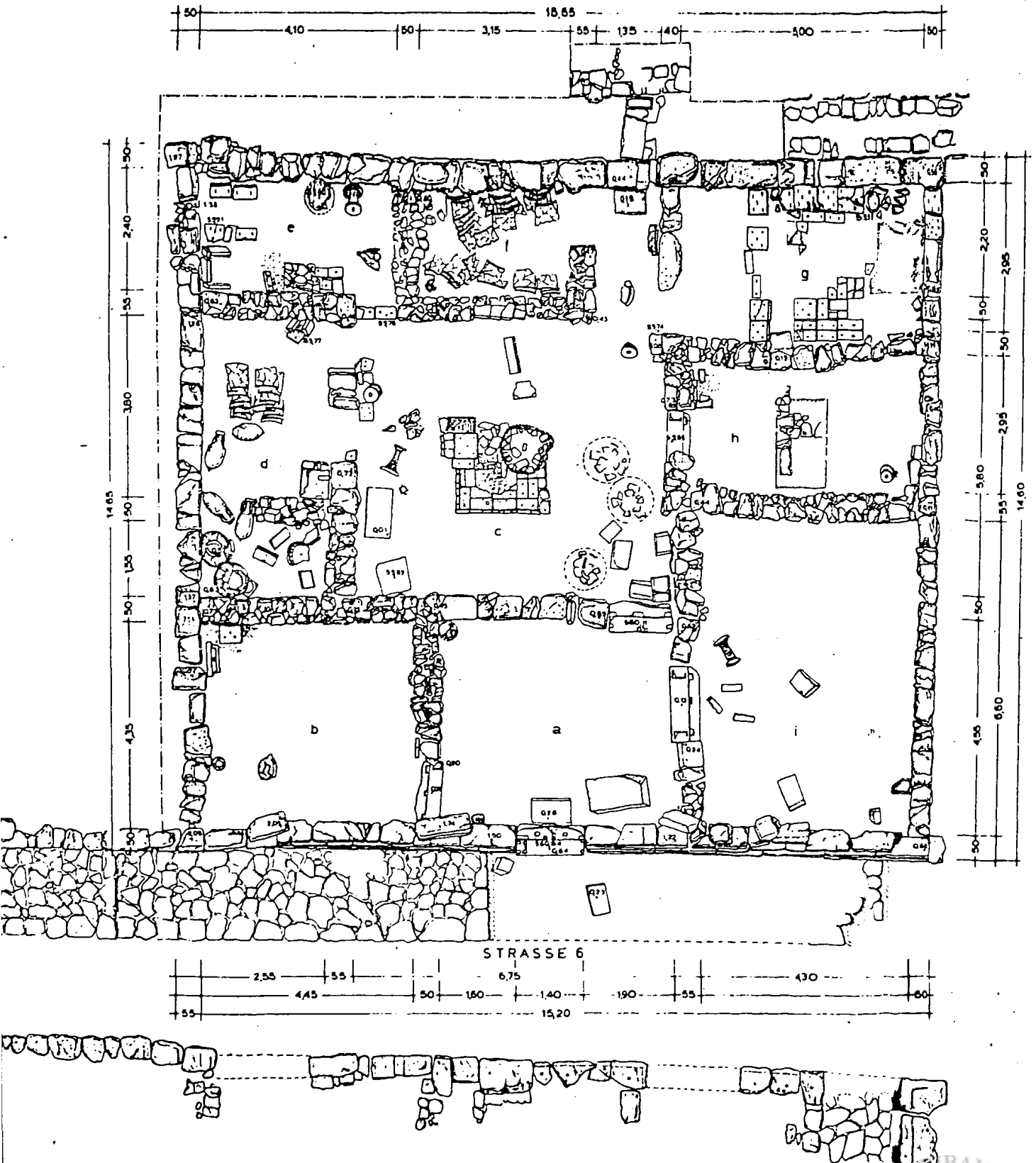
MAURERLE



KASSOPE · HAUS 5



0 0,5 1 2 3 4 m

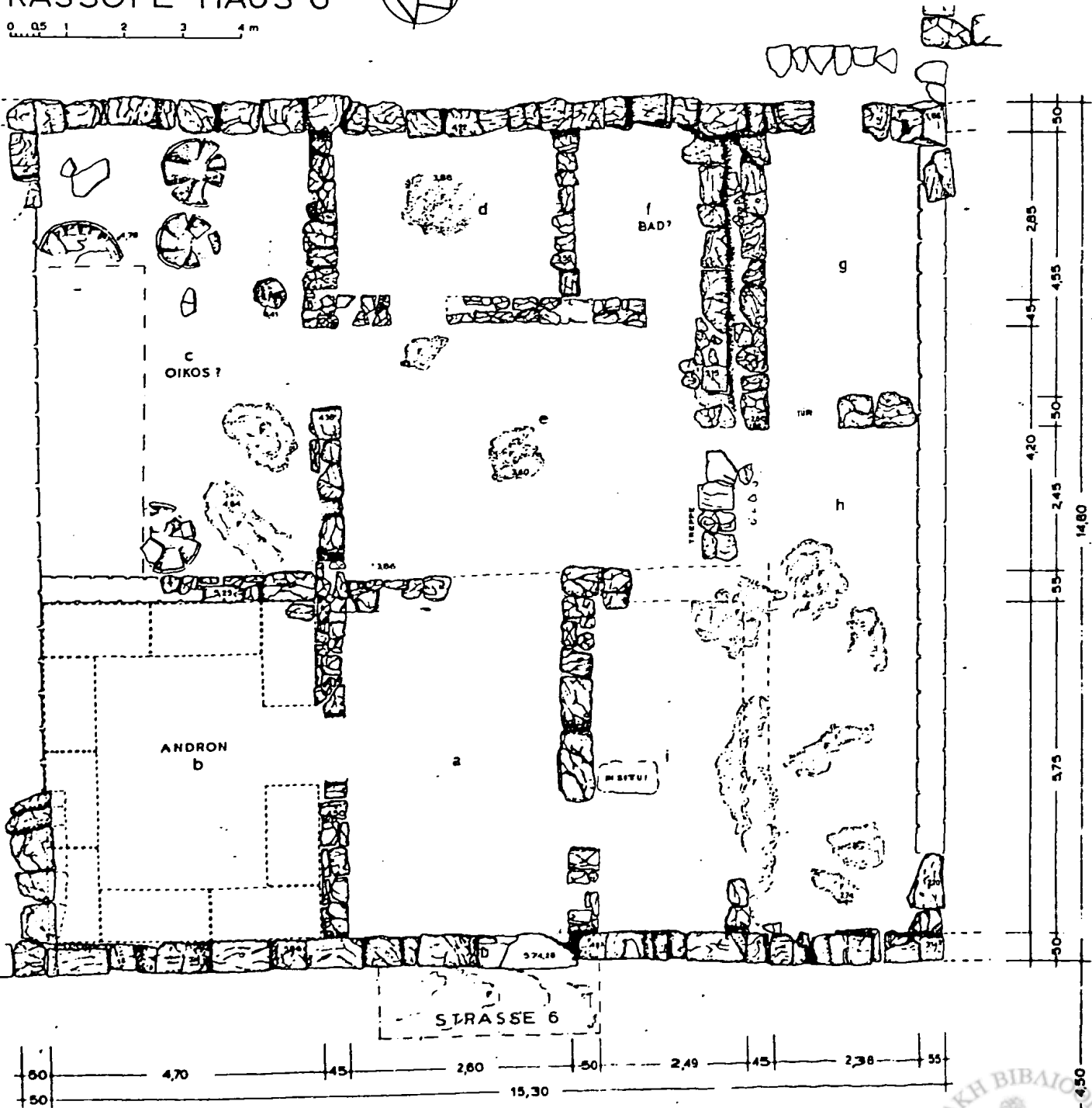
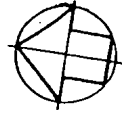


Σχέδ. 12



KASSOPE · HAUS 6

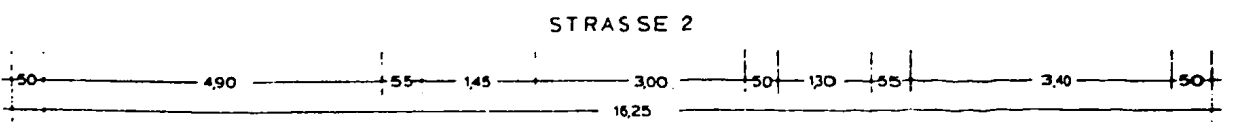
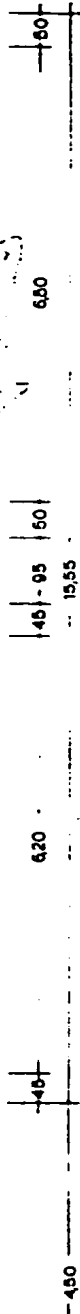
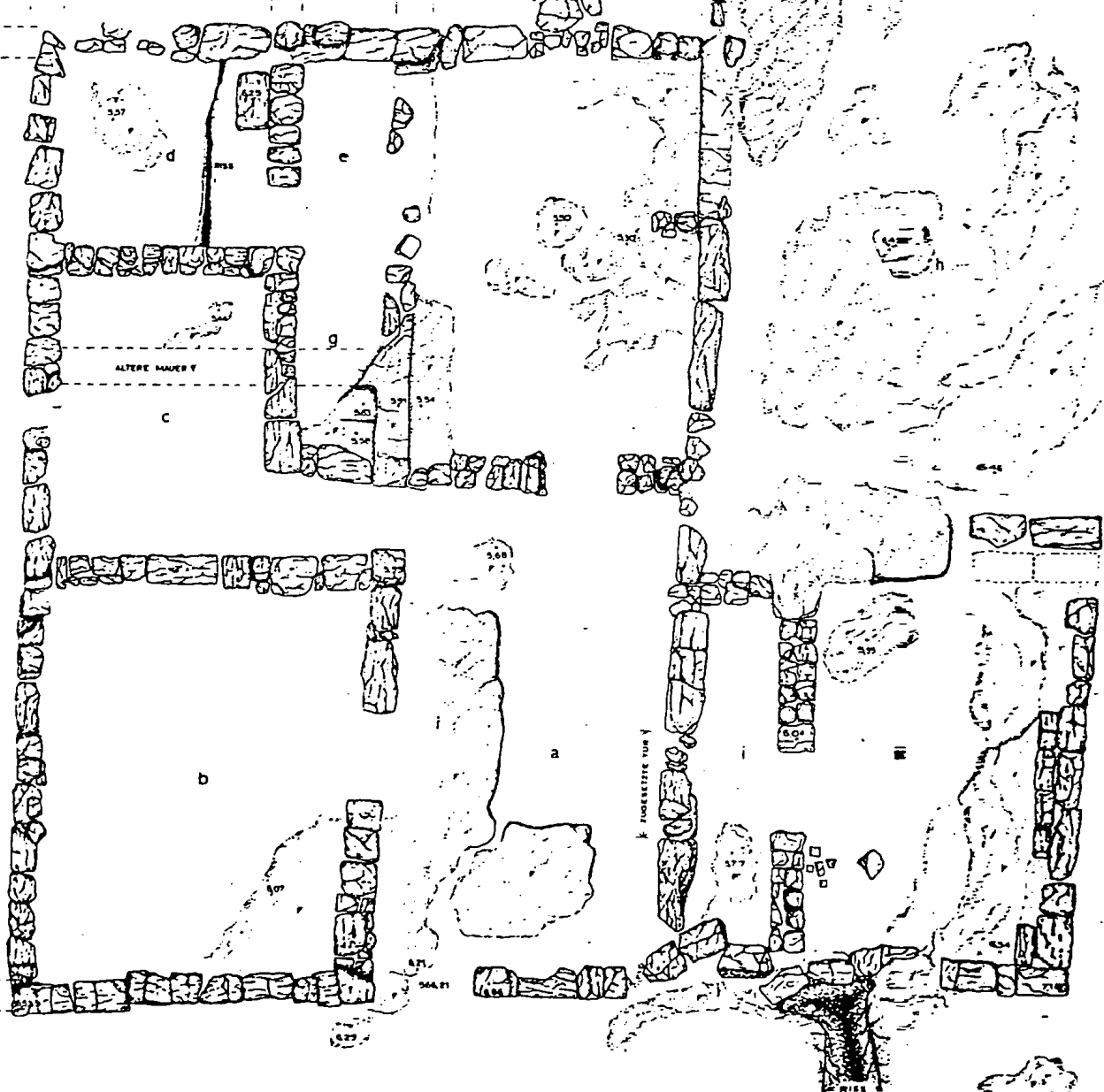
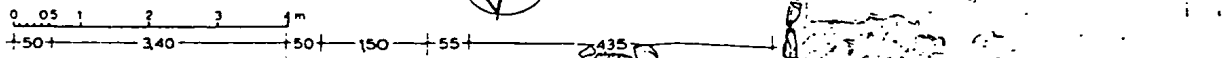
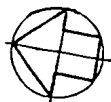
0 0,5 1 2 3 4 m



Σχέδ. 13



KASSOPE-HAUS 7

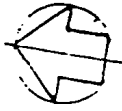


STRASSE 2

Σχέδ. 14



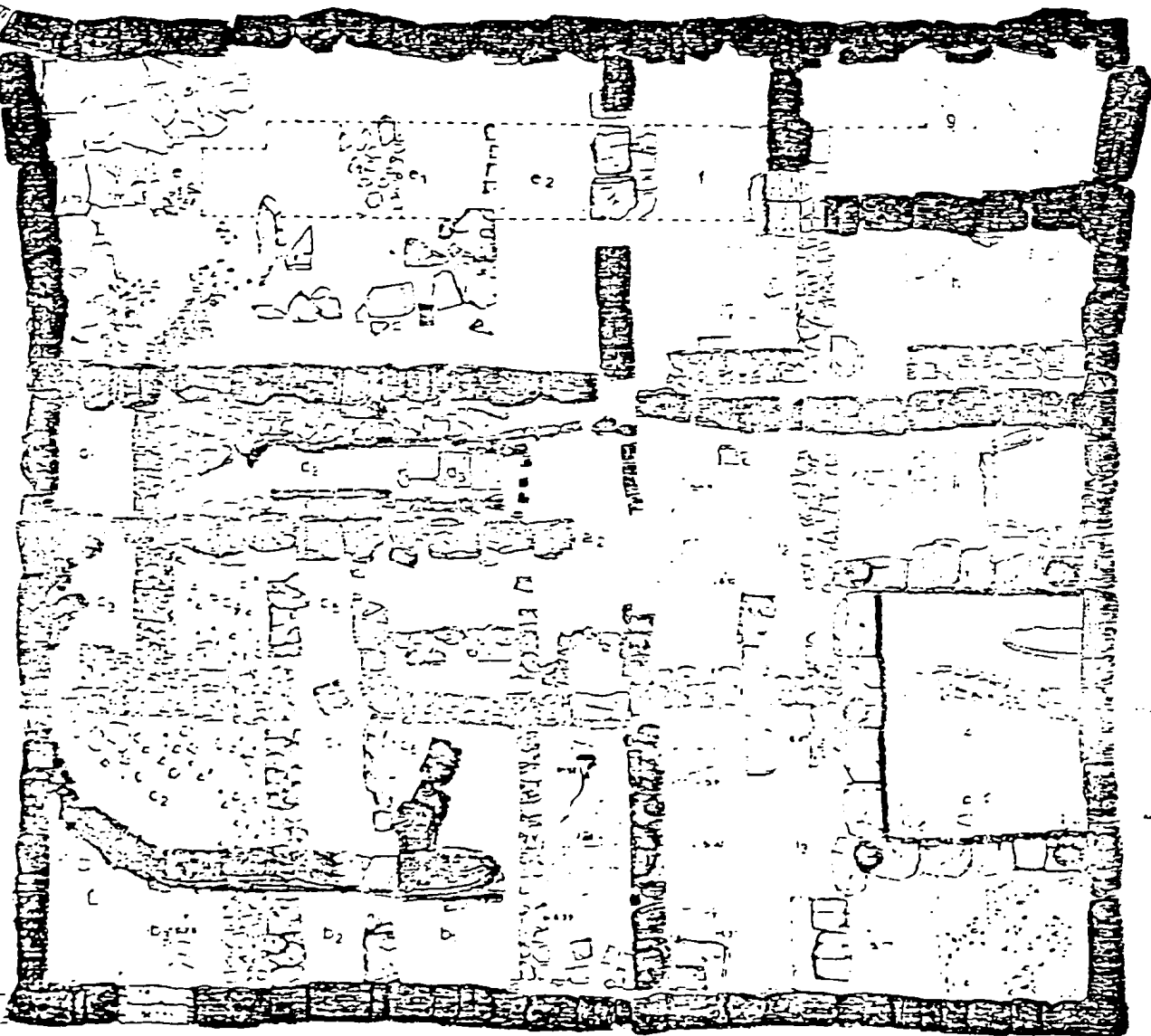
KASSOPE HAUS 8



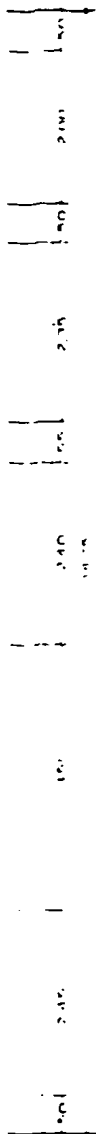
0 05 1 2 3 4m

1595

50 785 45 195 50 415 55



HAUPTSTASSE



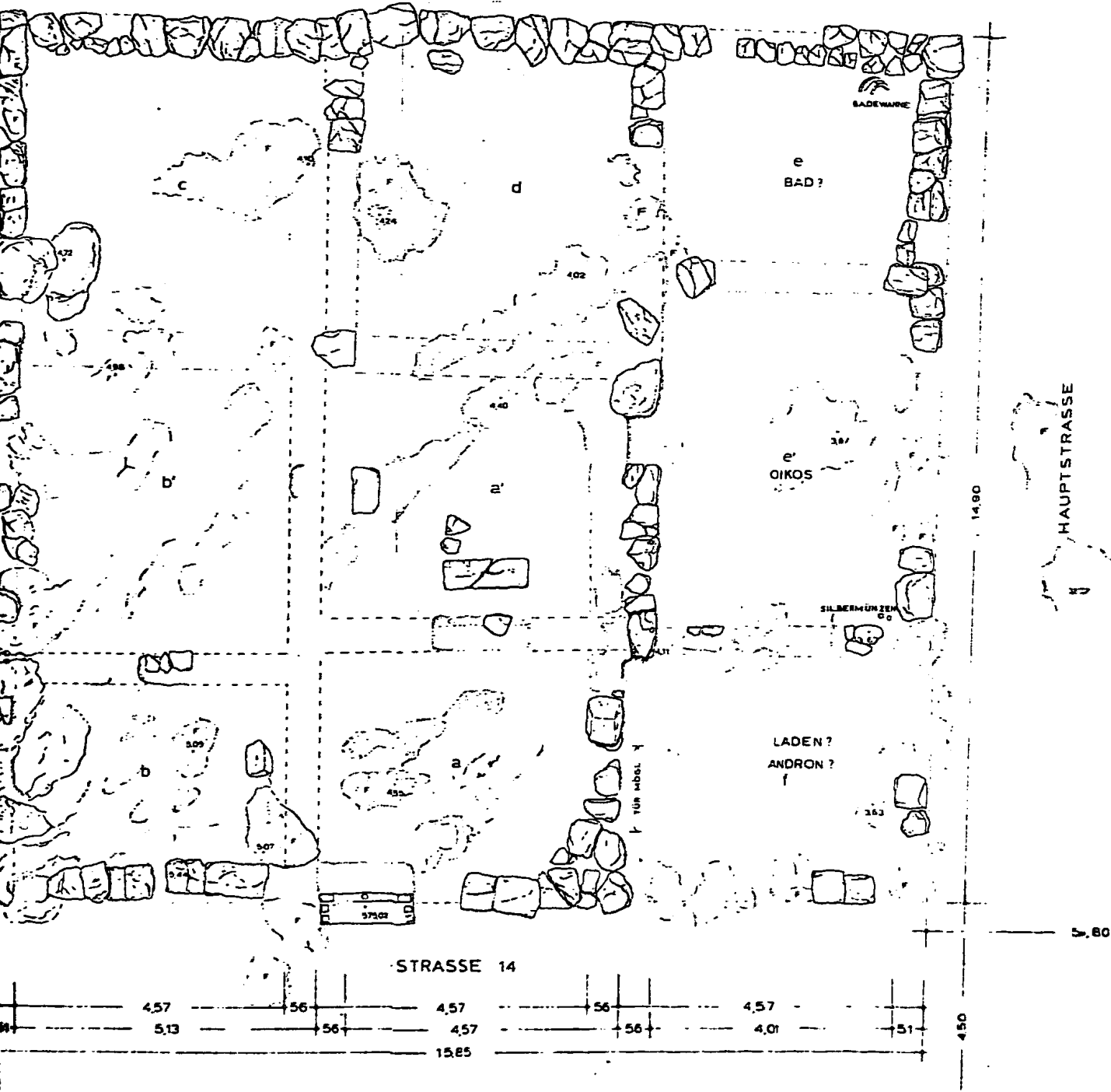
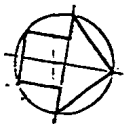
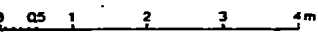
STRASSE 9

100 115 208 65 260 122 320 280
 50 125 60 90 45 180 120 45 225 40 360 55
 1595

ΣΧΕΔ. 15



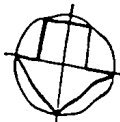
KASSOPE - HAUS 9



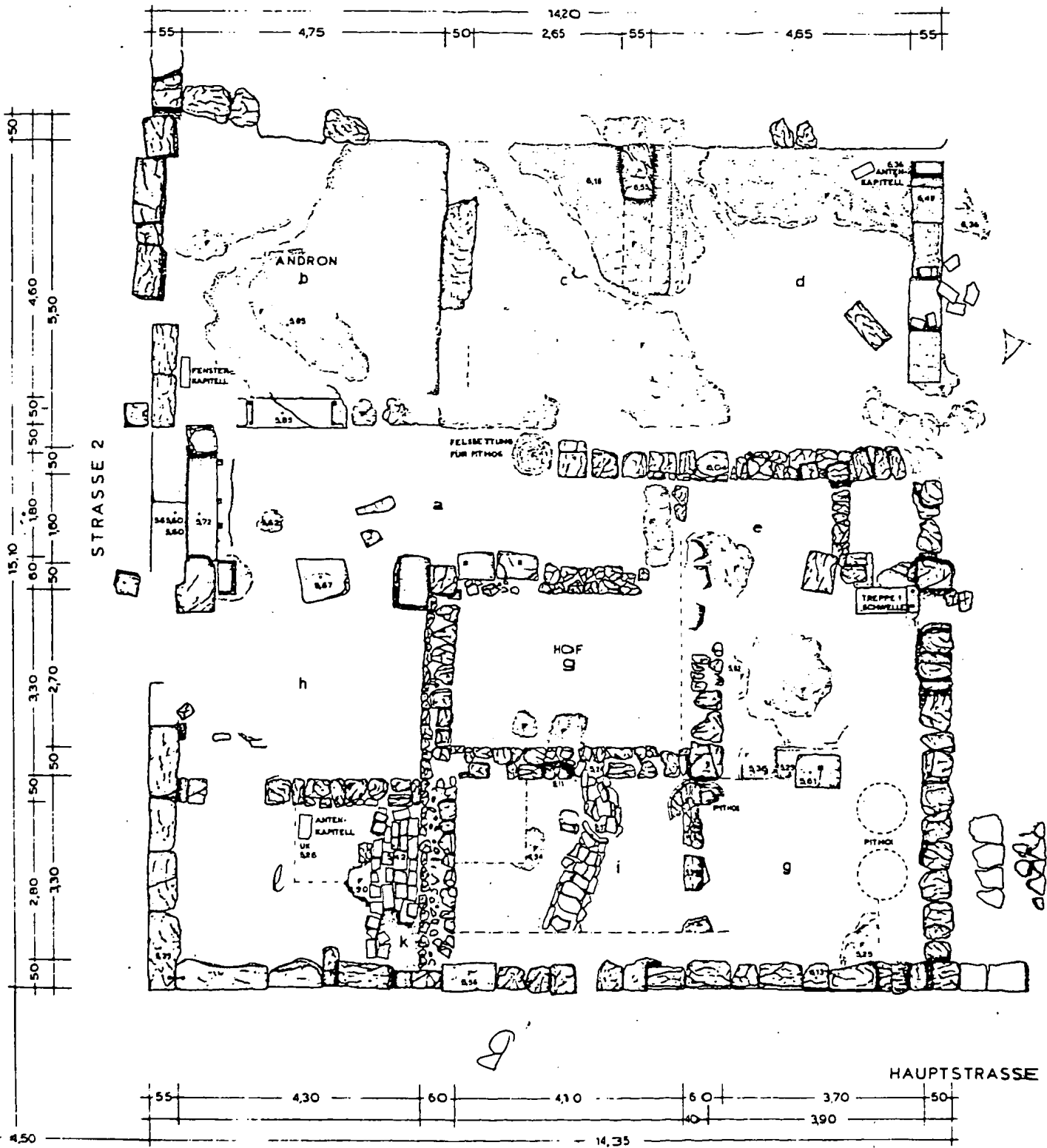
Σχέδ. 16



KASSOPE - HAUS 14



0 0,5 1 2 3 4m



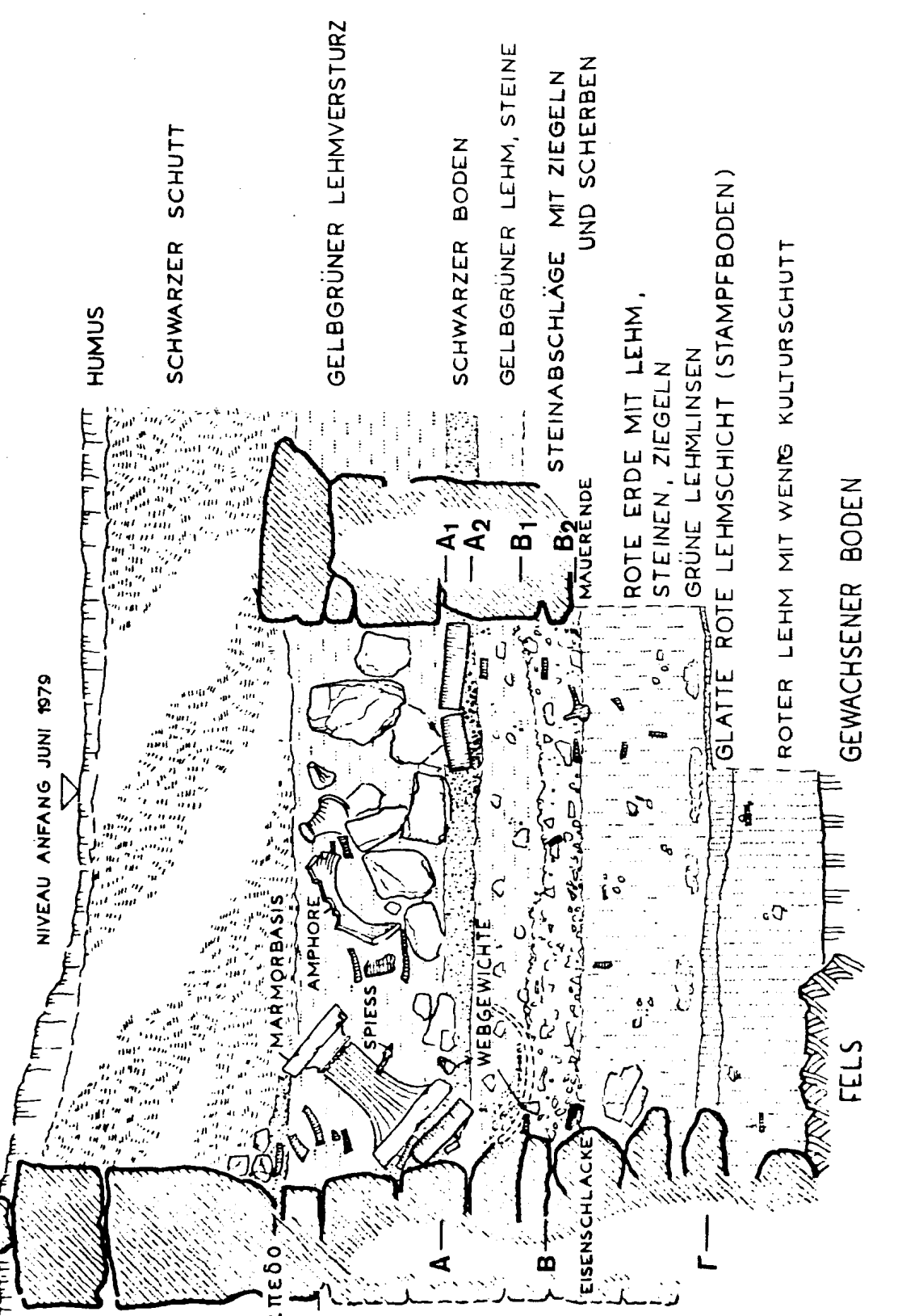
Σχ έ 6. 17



KASSOPE · HAUS 5 Raum e

9.7
7.6

NIVEAU ANFANG JUNI 1979



15/84



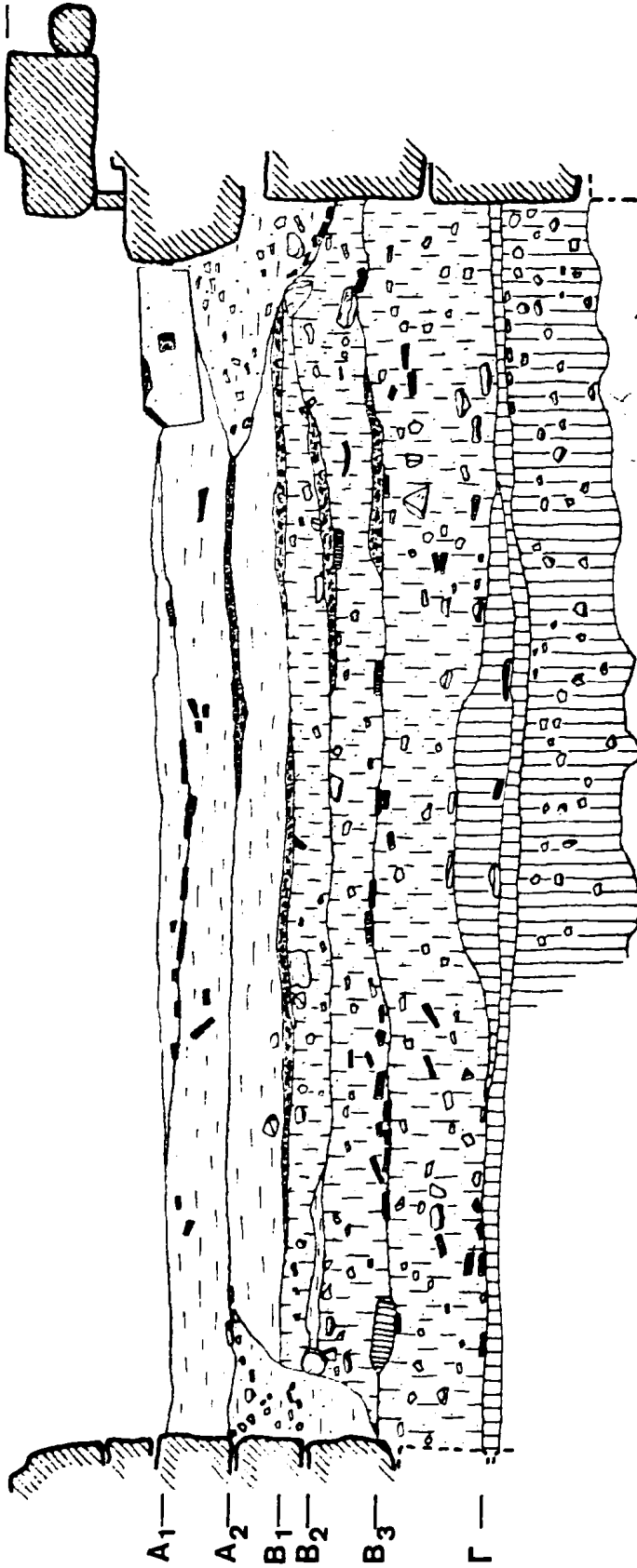
ΣΧΕΔ. 18



KASSOPE/HAUS 5 OST-WESTSCHNITT

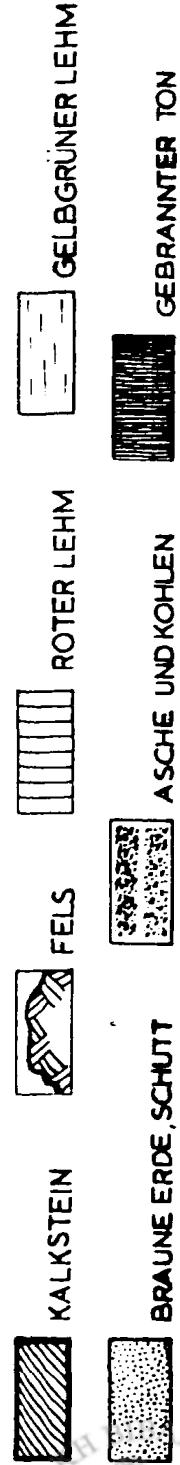
56100

άγνωστο
δάπεδο



α

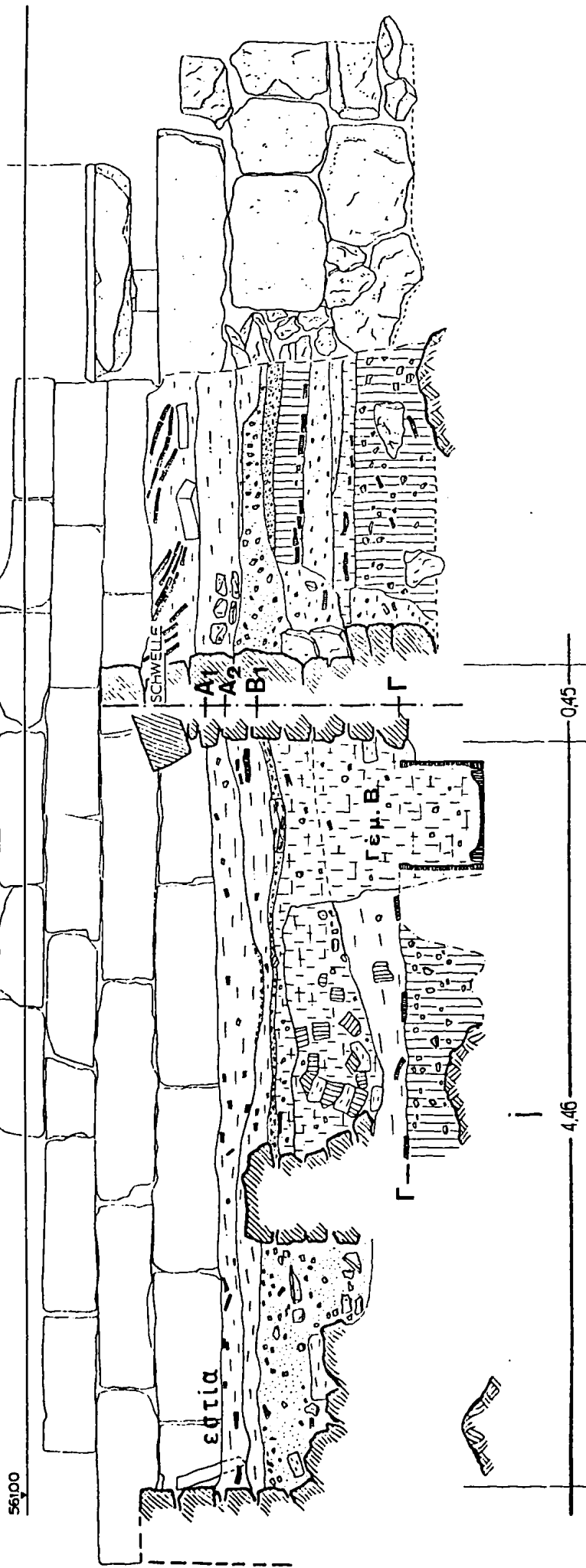
4.36




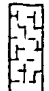






ΣΧ. 6.19



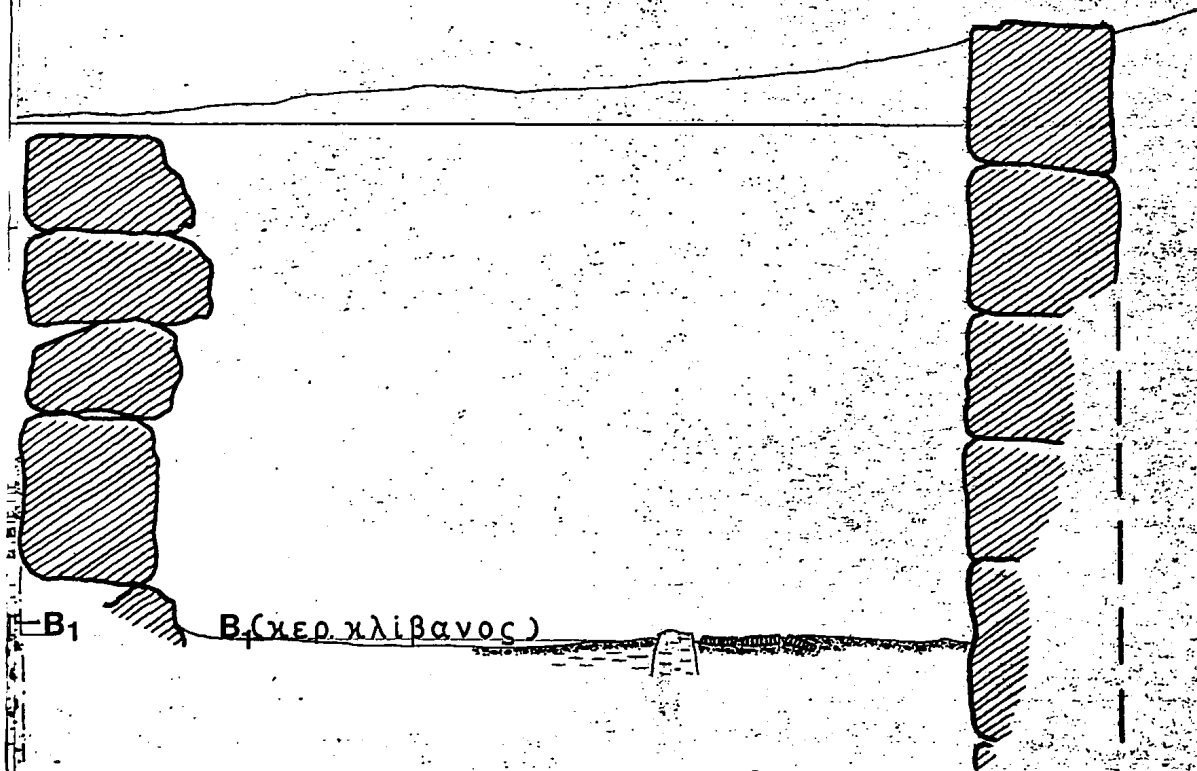
KASSOPE / HAUS 5 NORD-SUDSCHNITT



-  KALKSTEIN
-  ROTER LEHM
-  GELBGRÜNER LEHM
-  VERMISCHTER LEHM
-  FELS
-  BRAUNE ERDE, SCHUTT
-  ASCH E UND KOHLEN
-  GEBRANNTER TON

ΣΧΕΔ. 20





B_1

B_1 (χερ. κλίβανος)

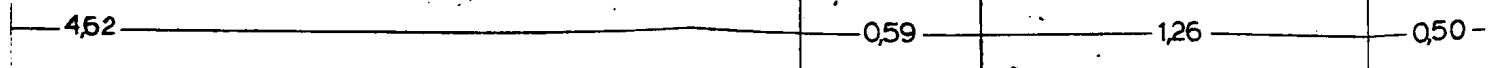
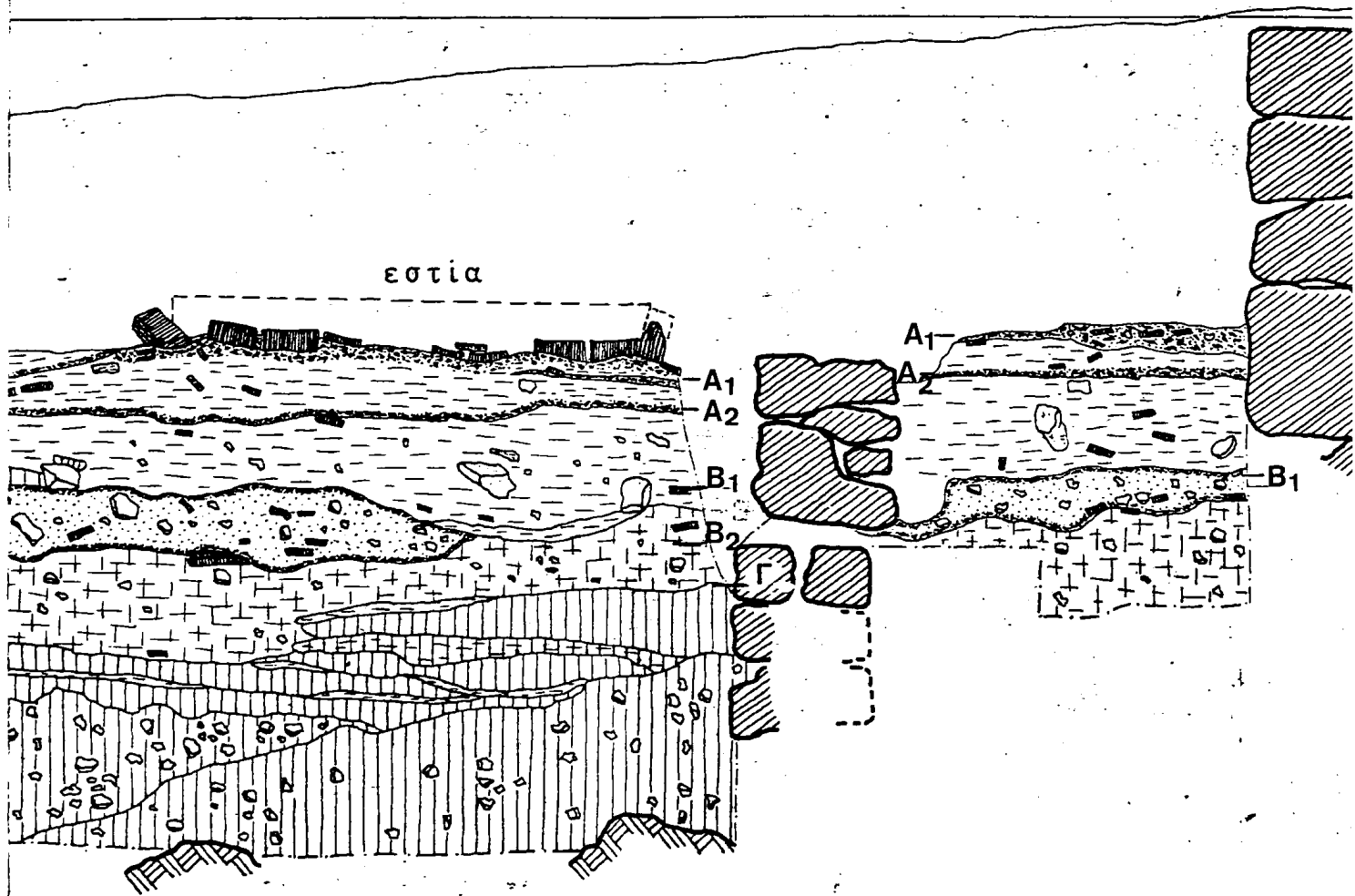
d

0,50

2,60

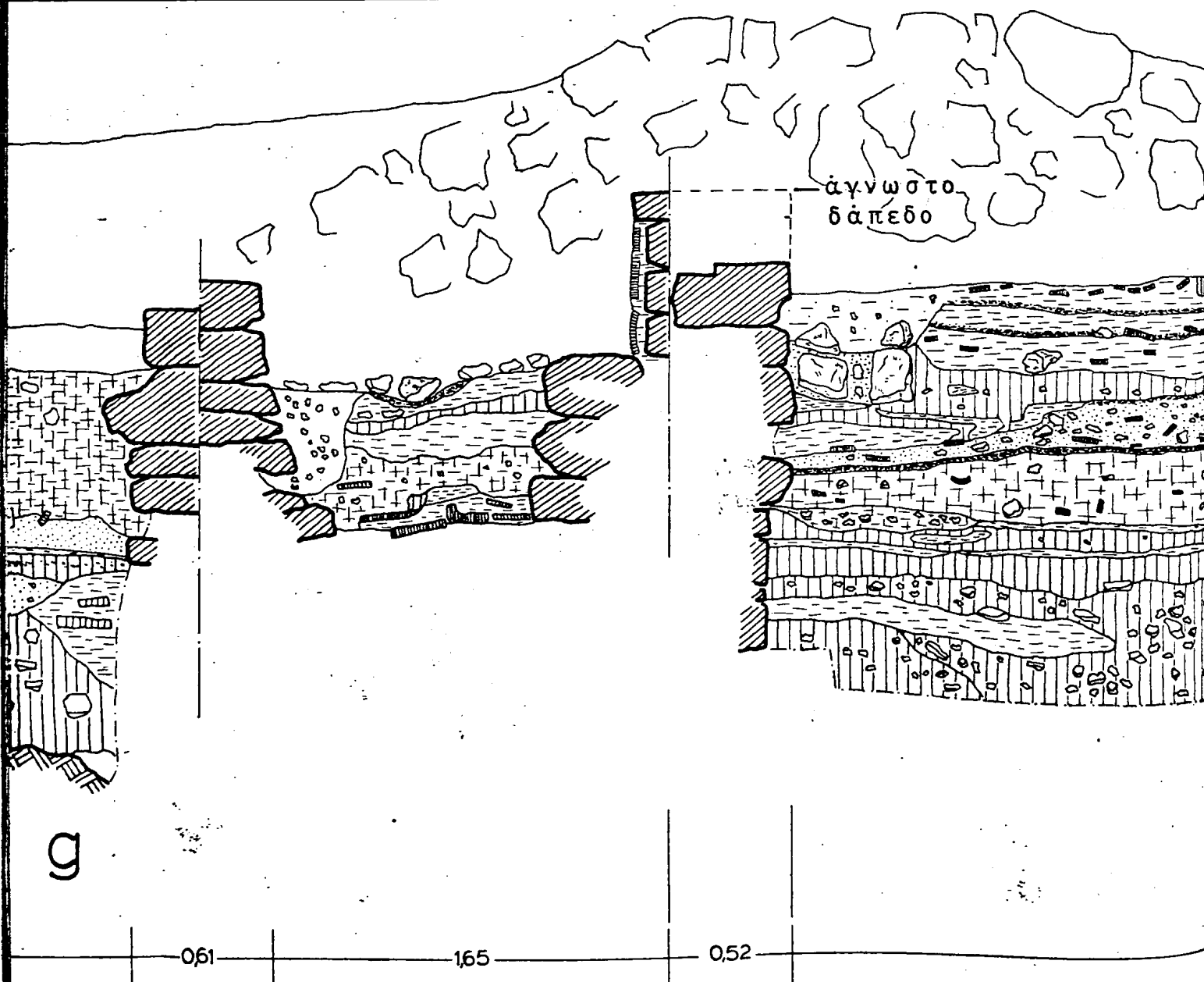
0,52





TTT  ASCHEN UND KOHLEN  GEBRANNTER TON





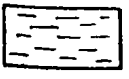
άγνωστο
βάπεδο

061

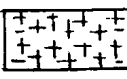
165

052

ΕΡ ΛΕΗΜ



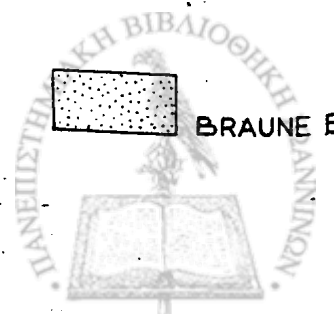
GELBGRÜNER LEHM



VERMISCHTER LEHM

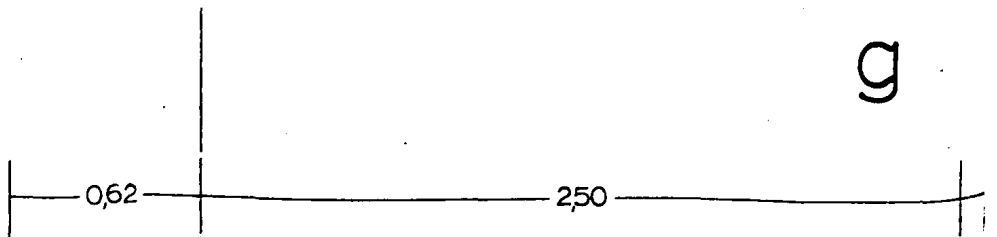
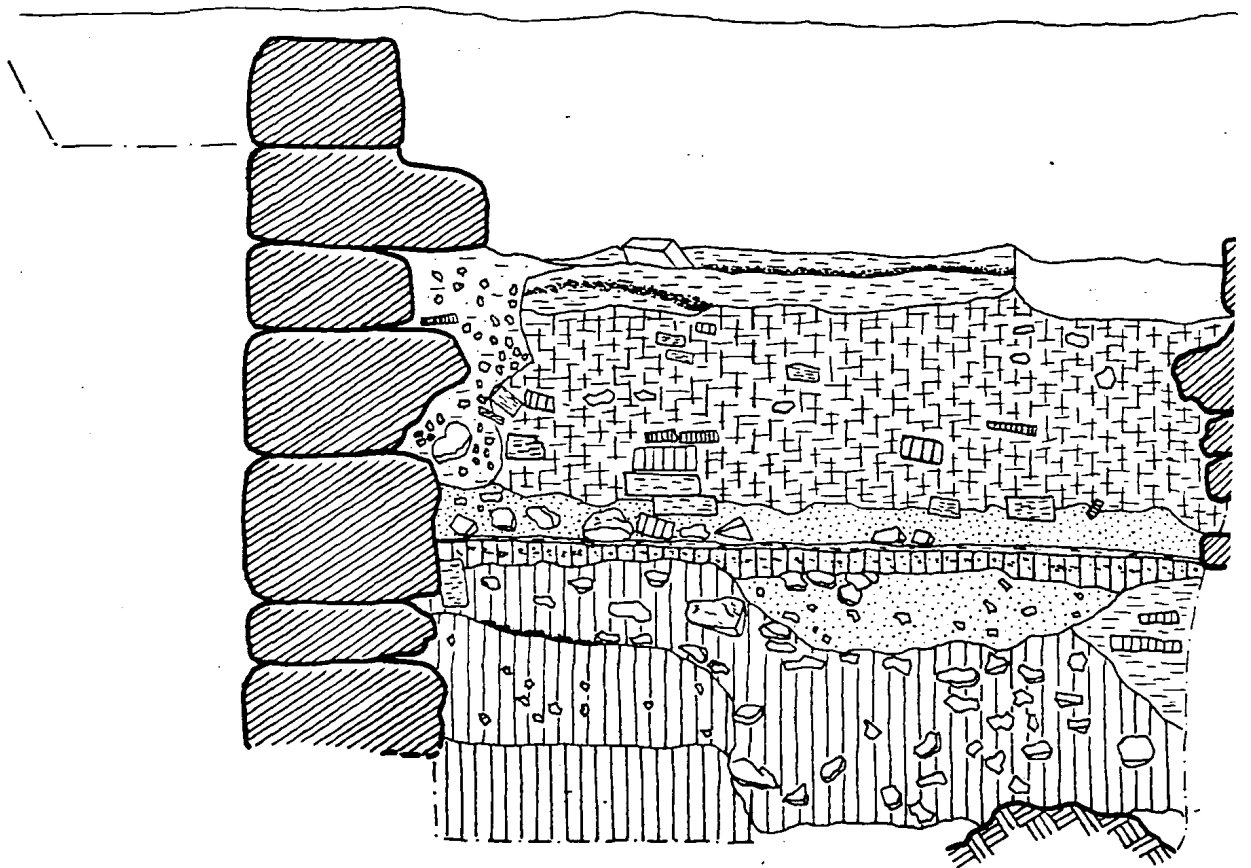


BRAUNE ERDE



KASSOPE / HAUS 5 NORD - SÜDSCHNITT

561,00
▼



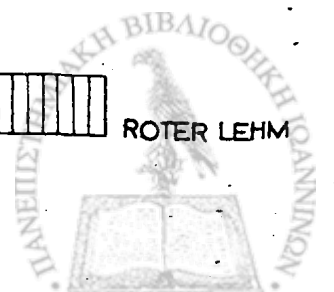
KALKSTEN



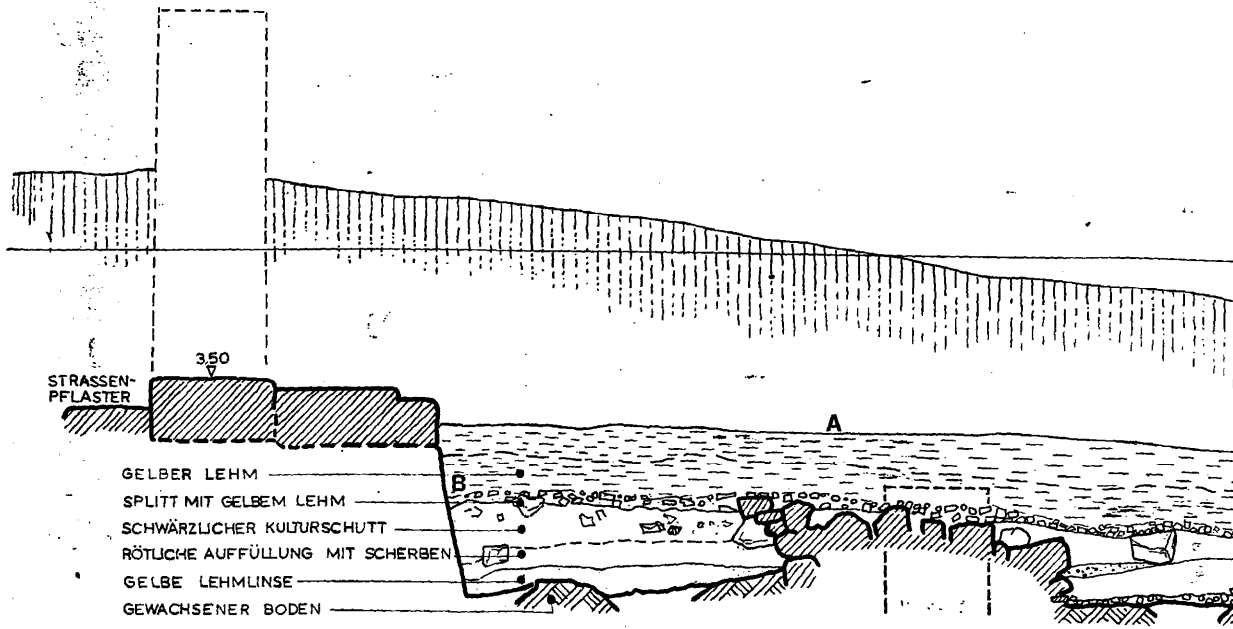
FELS



ROTER LEHM

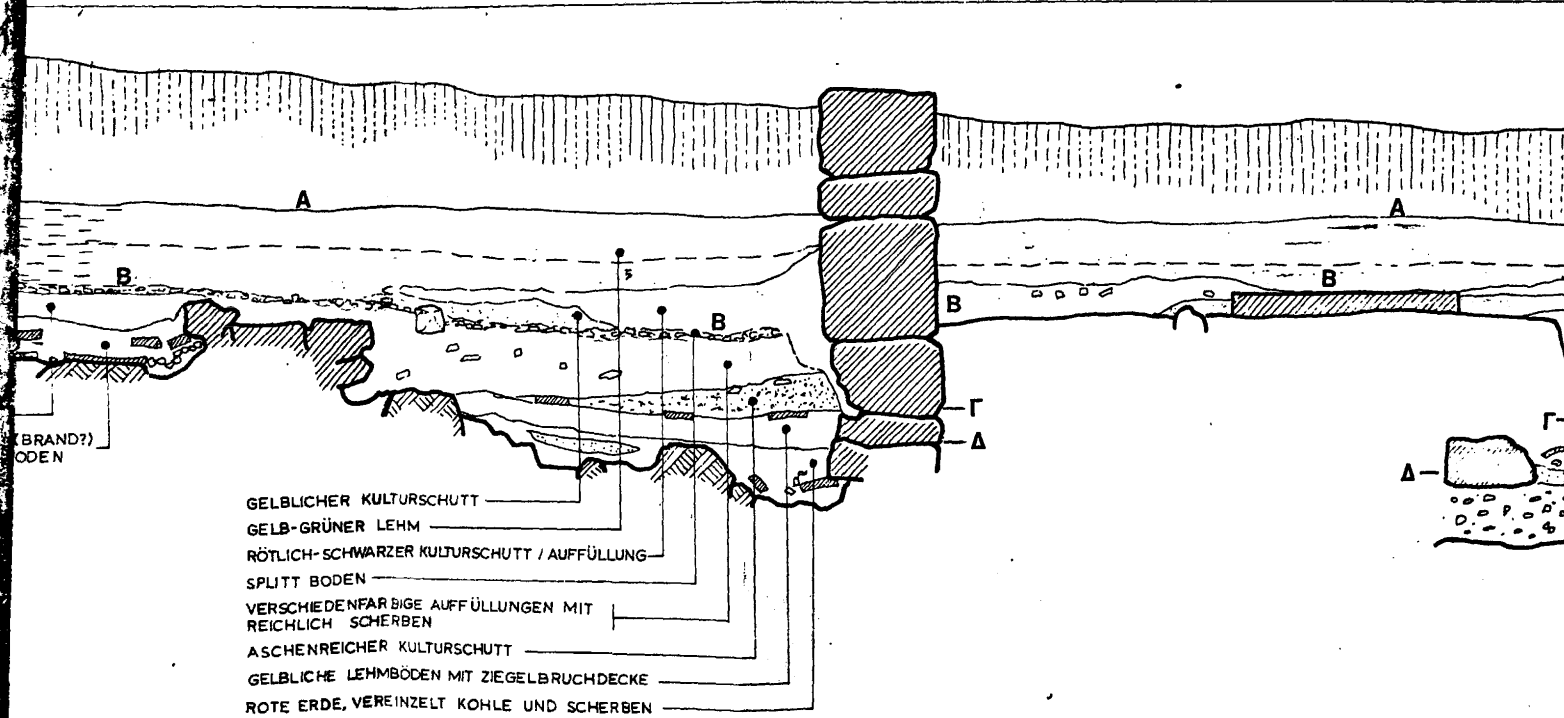


KASSOPE WEST-OST-SCHNITT / 1978 M. 1:25



Σπίτι 1

f''



Σχέδ. 23



ASCHENSCHICHT

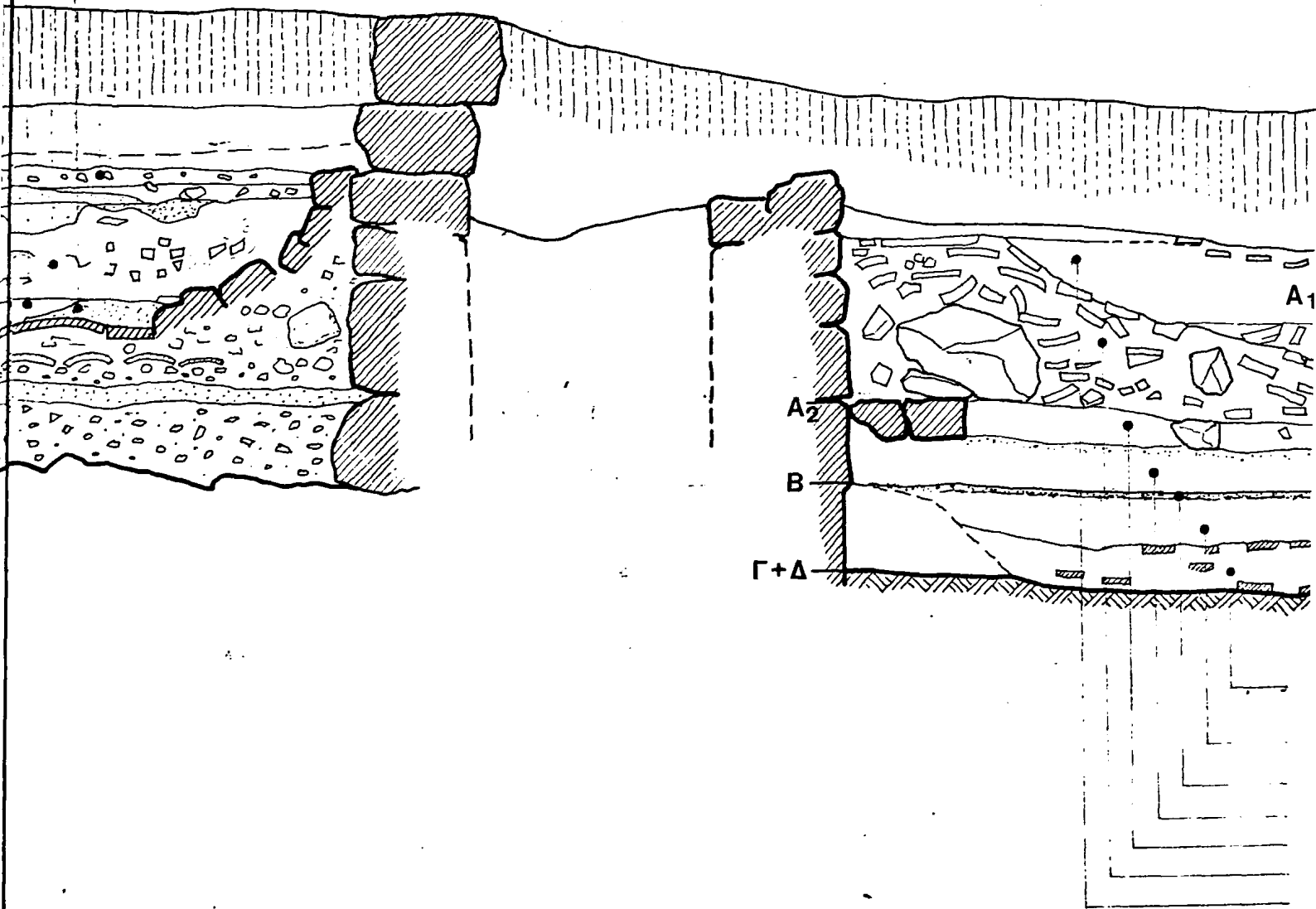
GRÜNER LEHM

ROTER LEHM

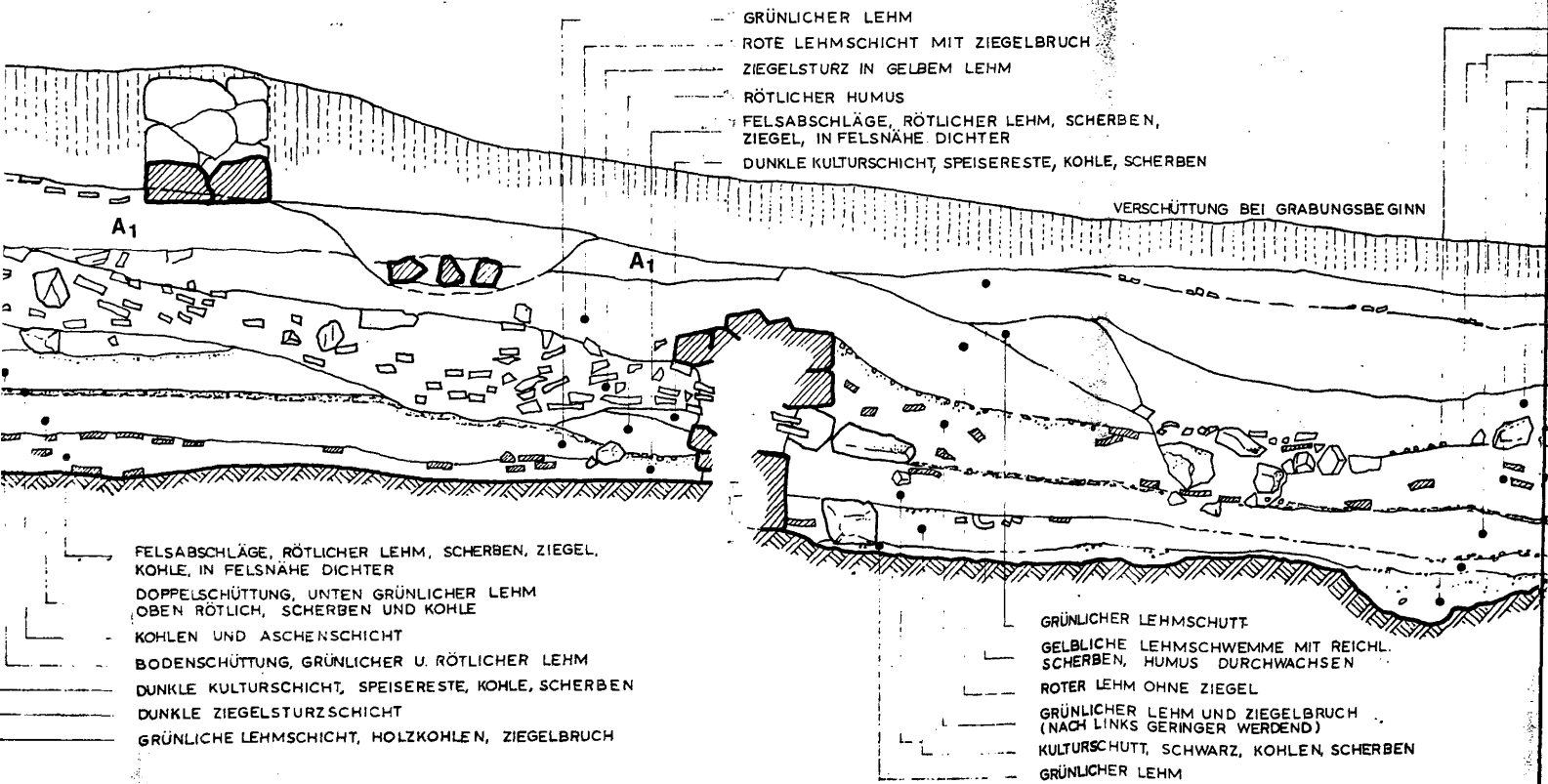
ROTE FÜLLSCHICHT MIT REICHL.
SCHERBEN UND ZIEGELN

GRÜNER LEHM UND KALK

ROTE ERDFÜLLUNG



b



Σχέδ. 22



f

564,00

FELSABSCHLÄGE, RÖTLICHER LEHM, SCHERBEN,
ZIEGEL, KOHLE, IN FELSNÄHE DICHTER
KULTURSCHUTT, SCHWARZ, KOHLEN, SCHERBEN
GRÜNLICHER LEHM U. GLEICHMÄSSIGER ZIEGELBRUCH
HUMUSREICHER KULTURSCHUTT
GELBLICHE LEHMSCHWEMME MIT REICHLICH
SCHERBEN, HUMUS DURCHWACHSEN

SCHWEMMHUMUS
LEHM UND HUMUS
DICHTER SCHERBENBRUCH

563,00

562,00

αγνωστο
δάπεδο

561,00

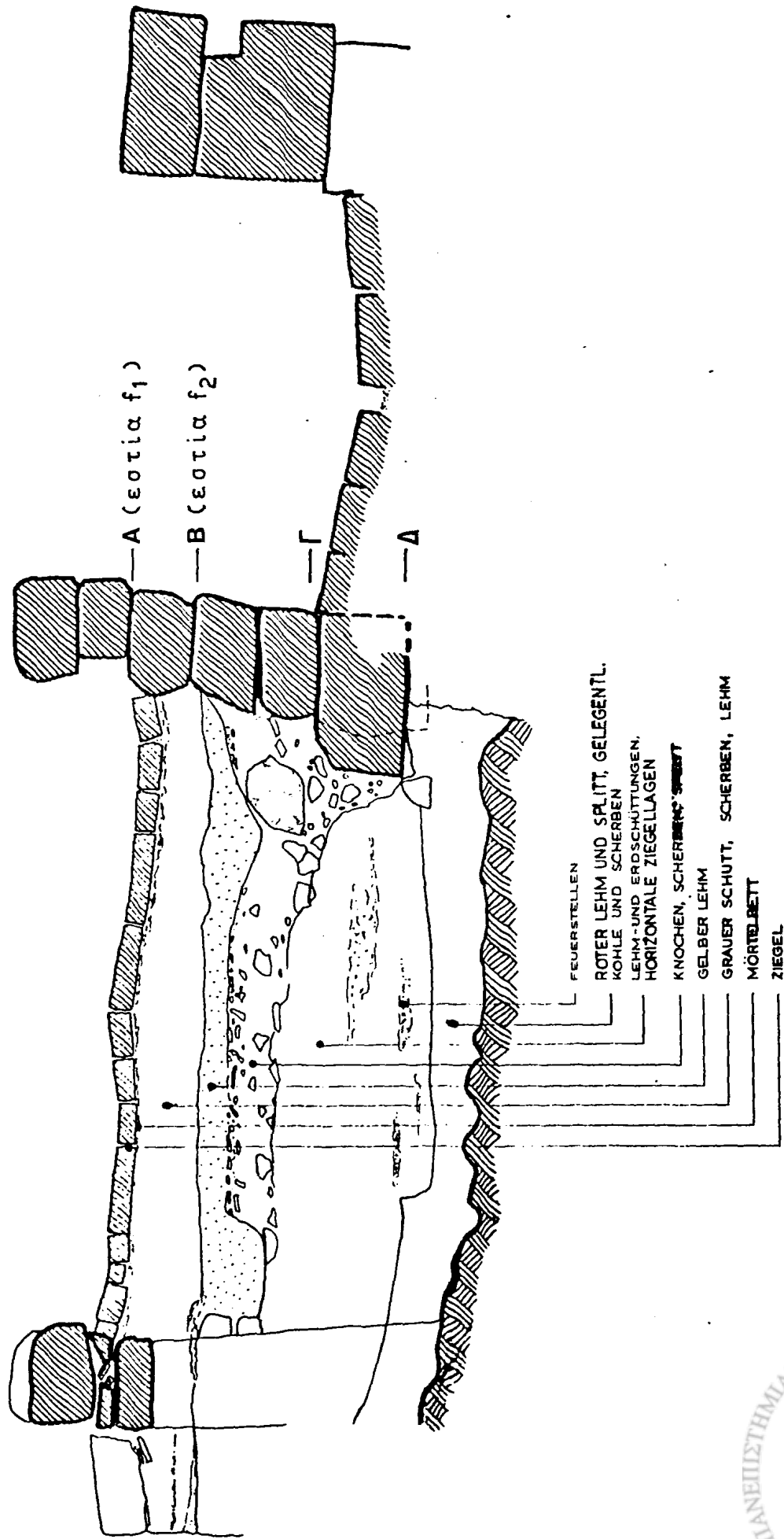
560,00

A1
A2
B
Γ
Δ

BRAND
FELSABSCHLÄGE, RÖTLICHER LEHM, SCHERBEN,
ZIEGEL, IN FELSNÄHE DICHTER
LEHMIGE AUFSCÜTTUNG OHNE ZIEGEL
LEHMZIEGEL-LAGE
KULTURSCHUTT, SCHWARZ, KOHLE, SCHERBEN, GEMISCHT
MIT LEHMSCHÜTTUNG (KEIN BODEN - NUR FÜLLUNG)
HAUSBODEN, DUNKLE KULTURSCHICHT, SPEISERESTE,
KOHLE, SCHERBEN
ZERSTÖRUNG, DUNKLE ZIEGELSTURZSCHICHT
NACHGEWACHSENER MAUEREBNBRUCH, WENIG ZIEGEL



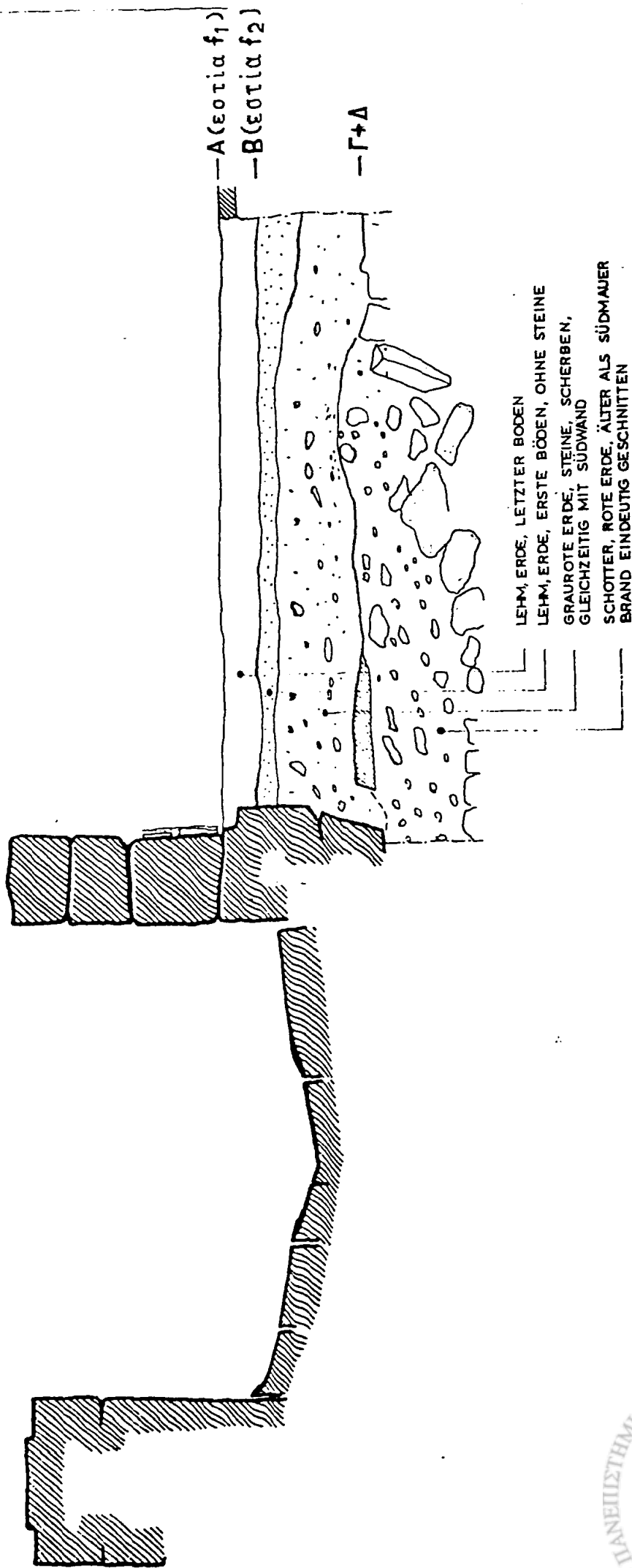
ΚΑΣΣΩΠΗ
 Σπίτι 1
 δωμάτιο 9



Σχέδ. 24



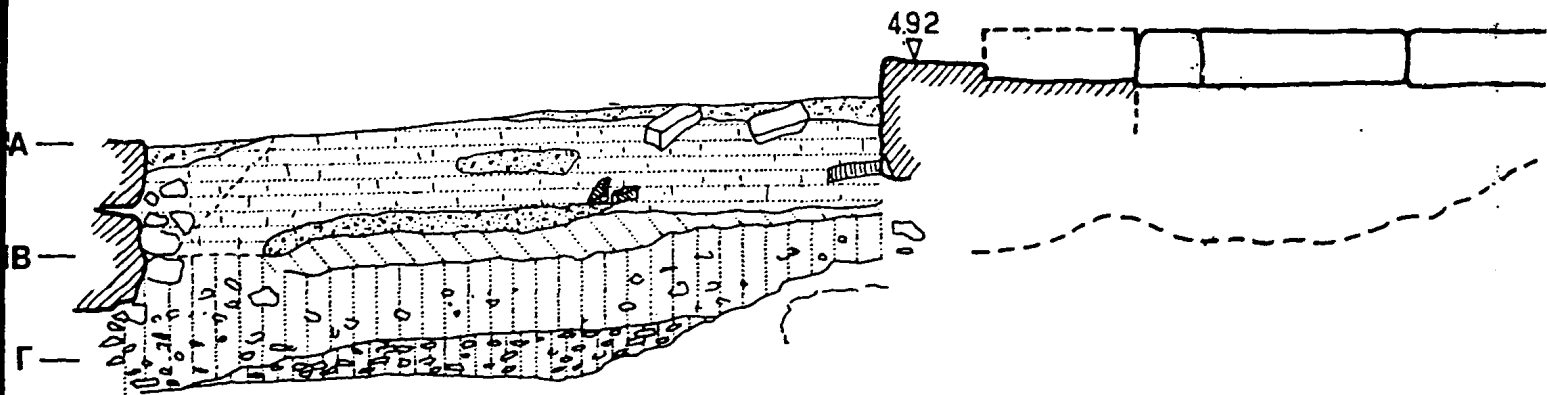
ΚΑΣΣΩΠΗ
 Σπίτι
 δωμάτιο



ΣΧΕΔ. 25

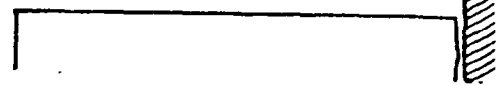


ΚΑΣΣΩΠΗ
Σπίτι 3
δωμάτιο C
Τομή νότια



ΣΧ

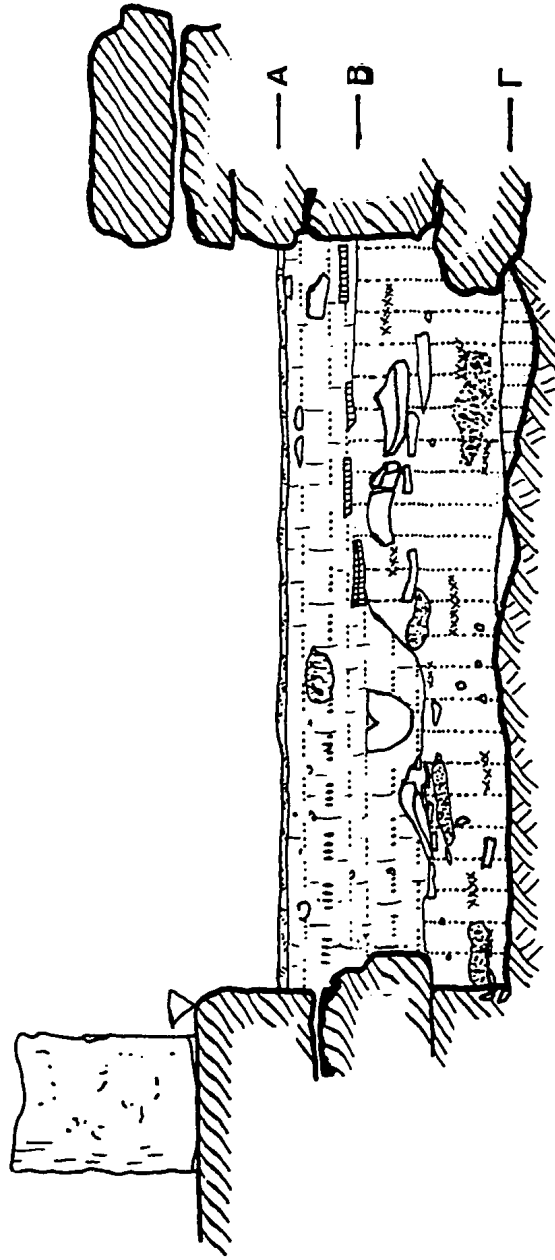




Σχέδ. 26.



ΚΑΣΣΩΠΗ
Σπίτι 3
δωμάτιο C
Τομή ΒΑ γωνίας



Σχέδ. 27

ΚΑΣΣΩΠΗ
Σπίτι 3, Τομή Β-Ν

εστία

A

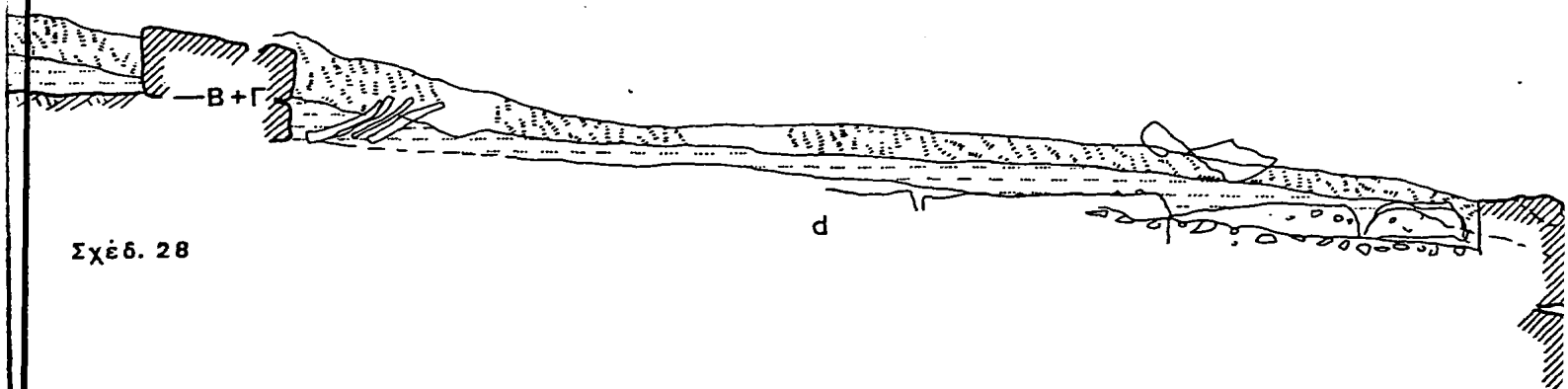
627

f

e

Σχέδ. 2

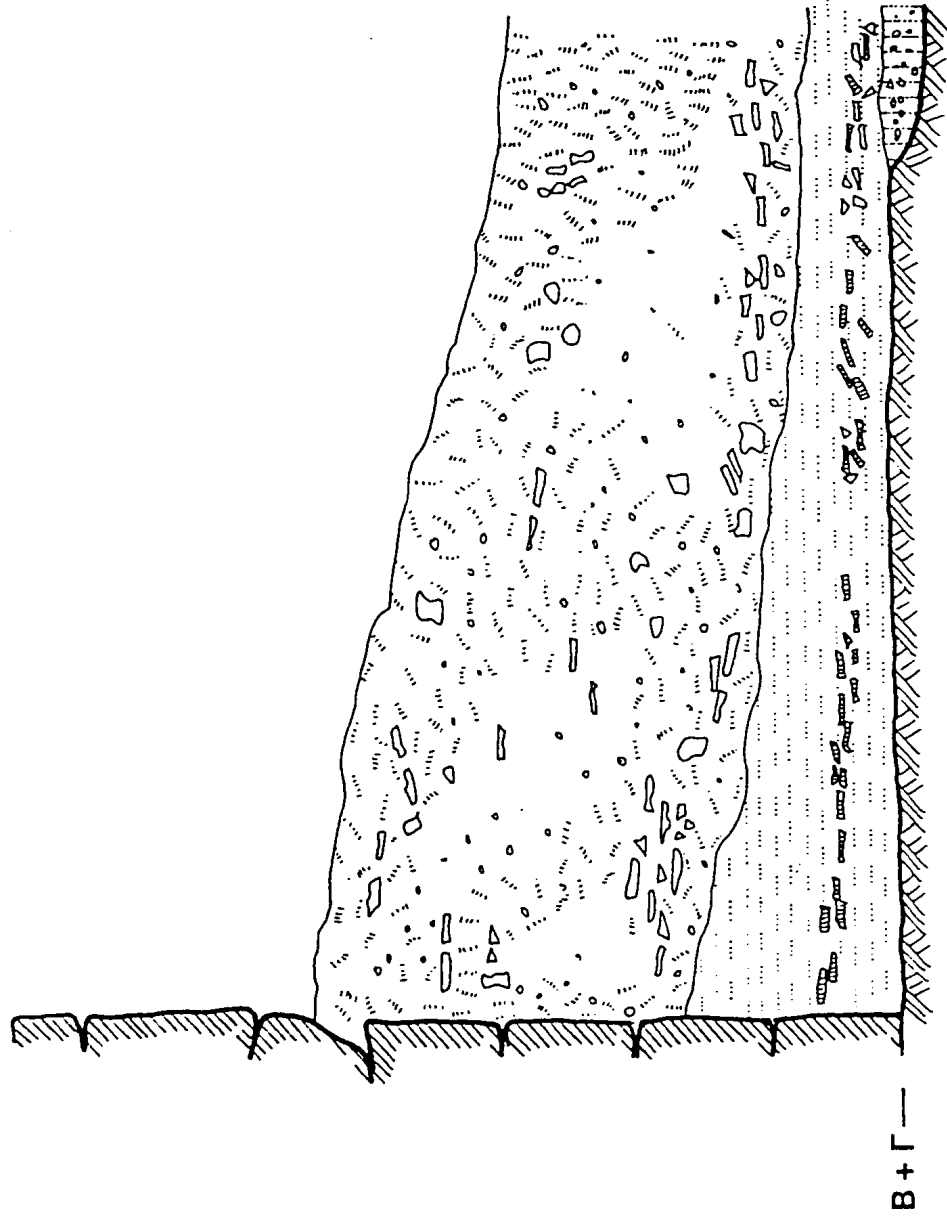




Σχέδ. 28

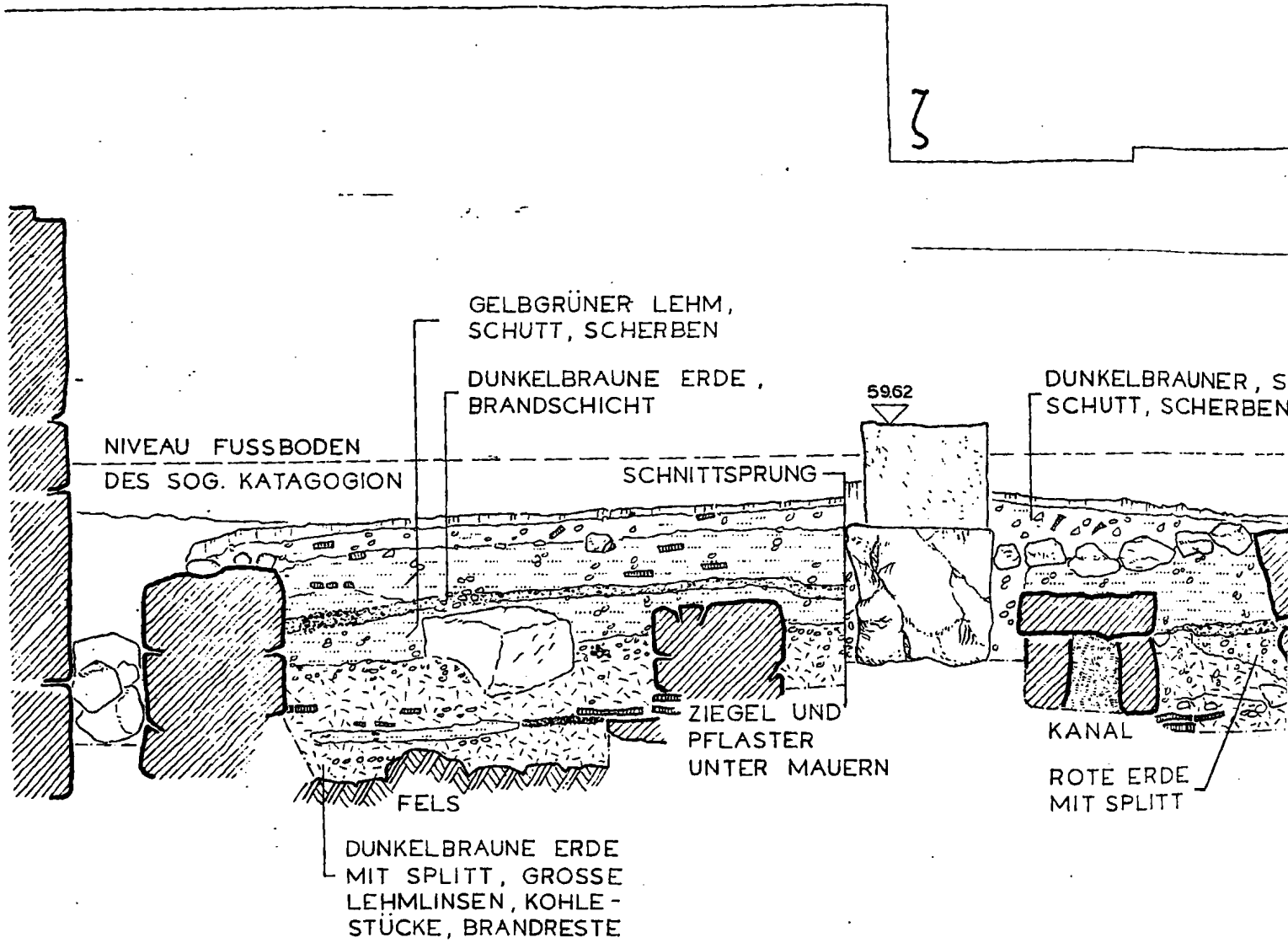


ΚΑΣΣΩΠΗ
Σπίτι 6
Δωμάτιο b



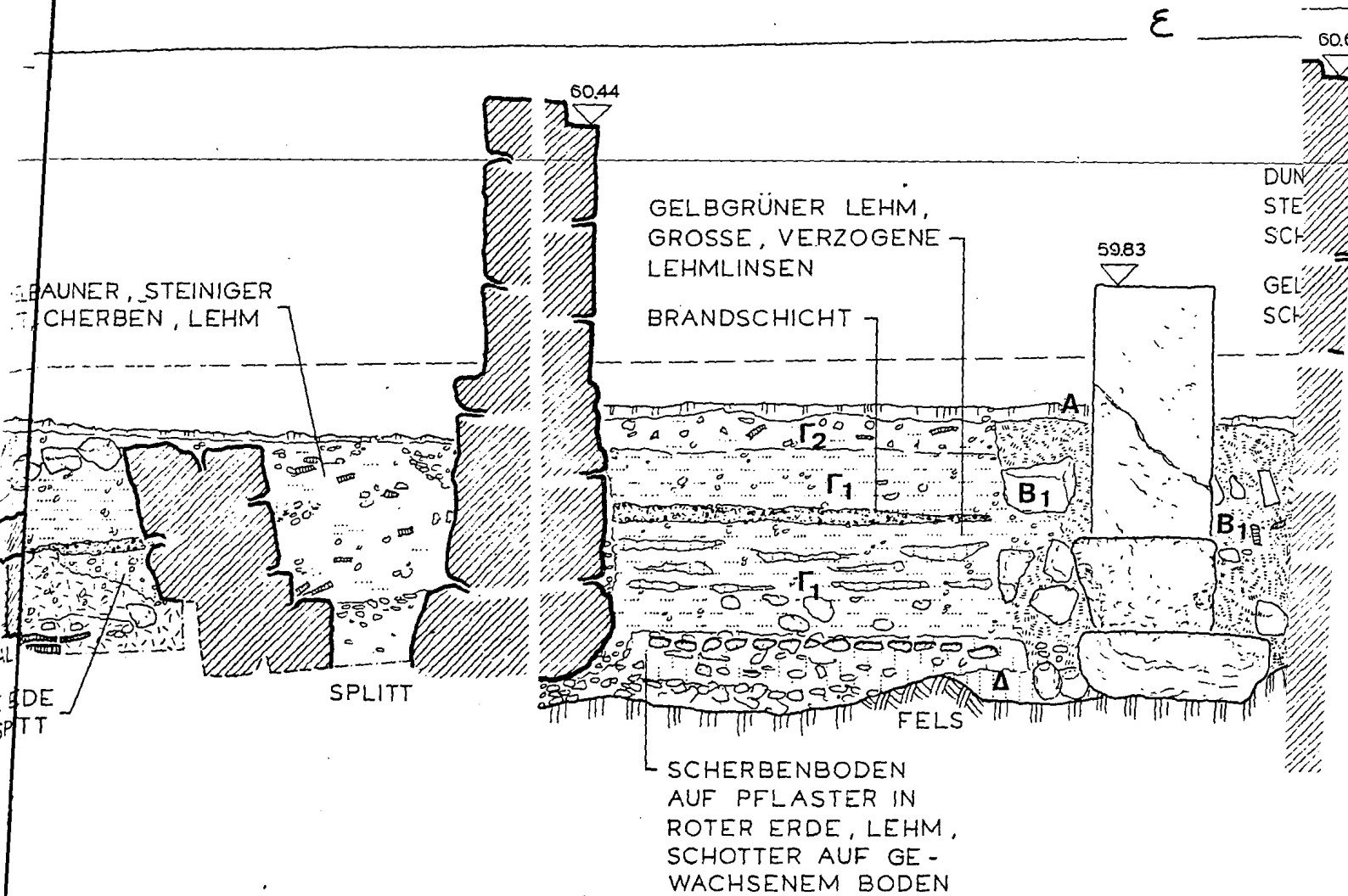
ΣΧΕΔ. 29





KASSOPE · SOG. KATAGOGION



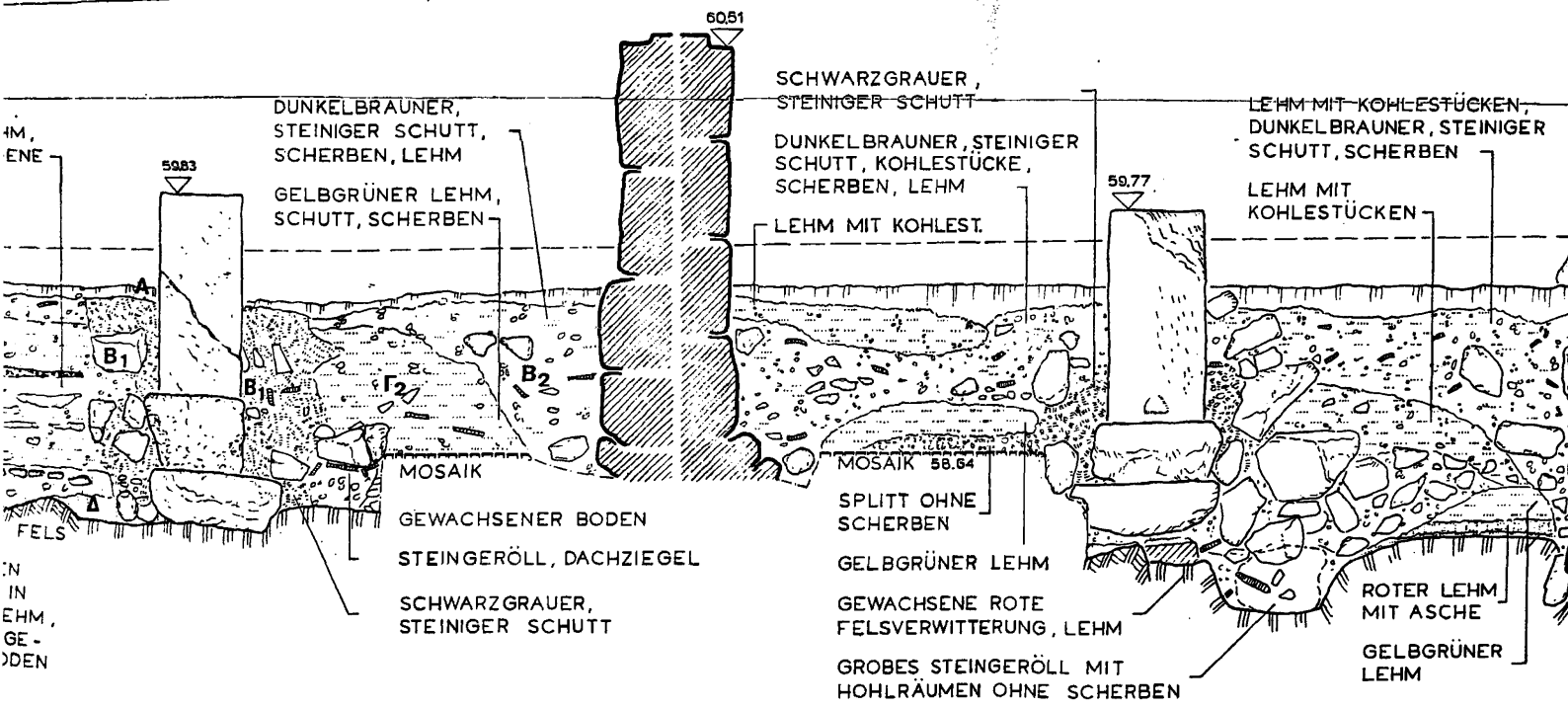


LOGION : Nord / Süd · Schnitt



ε

δ

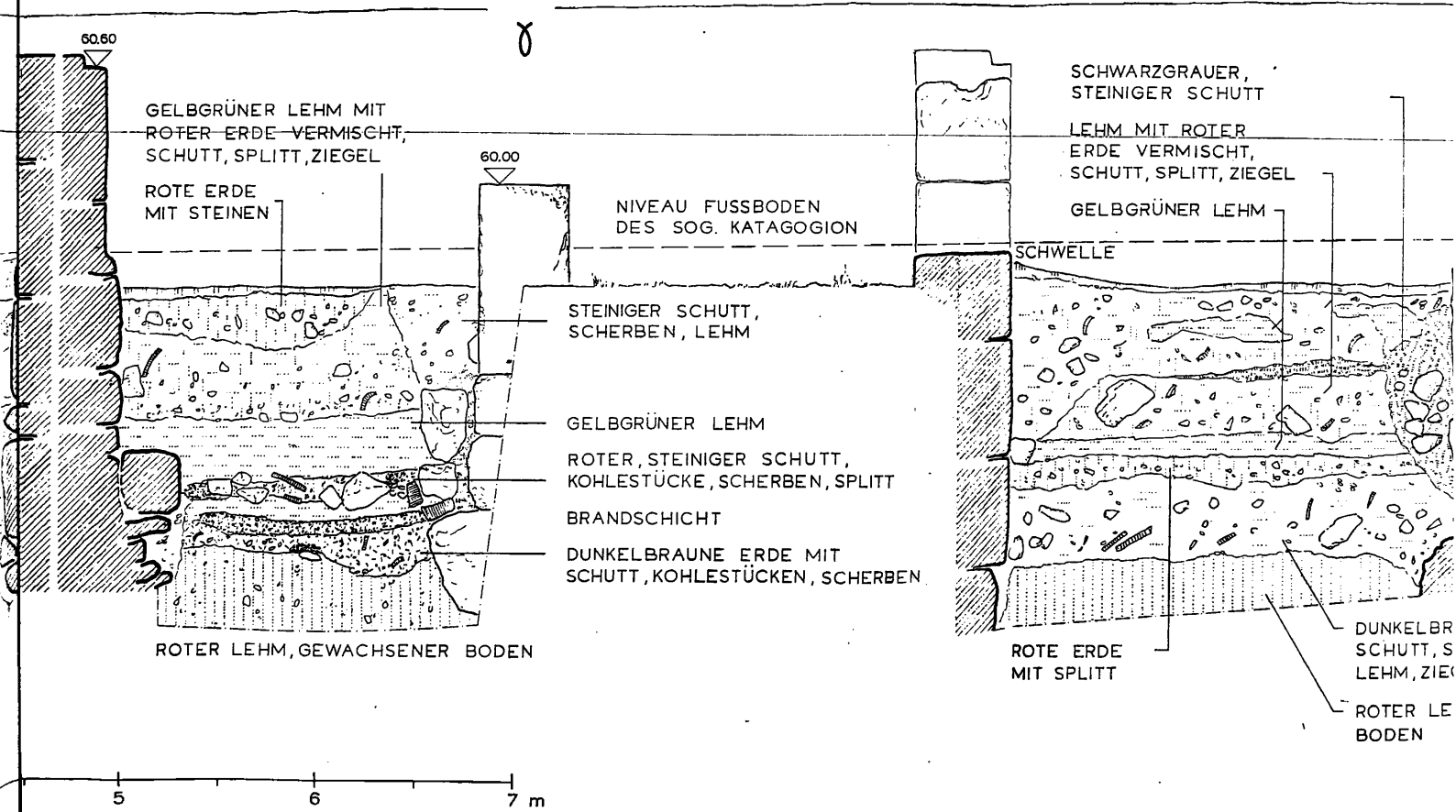


150/4

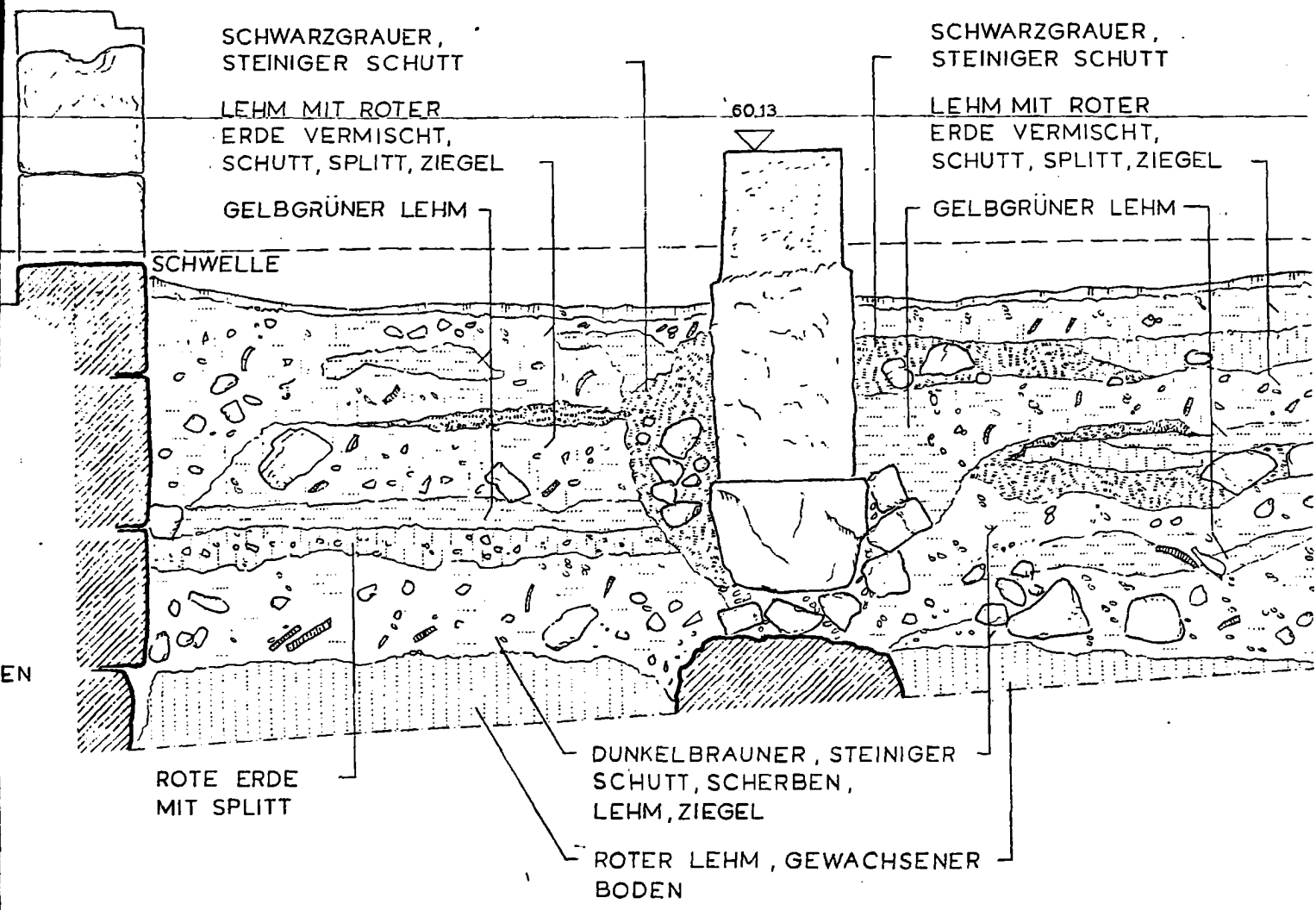


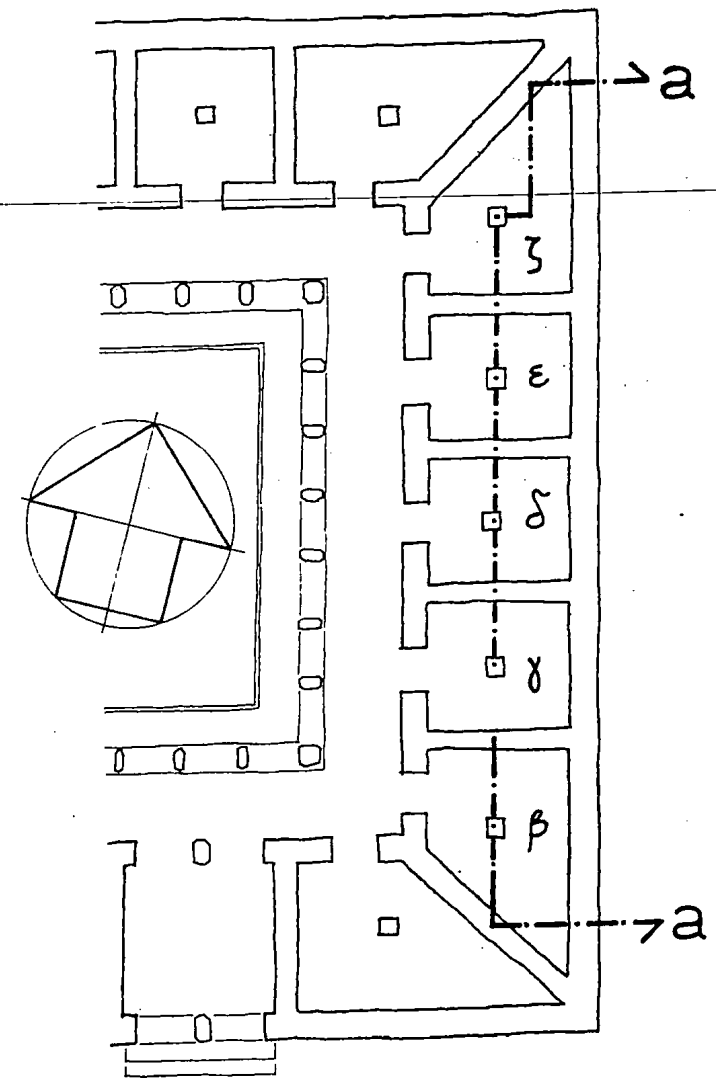
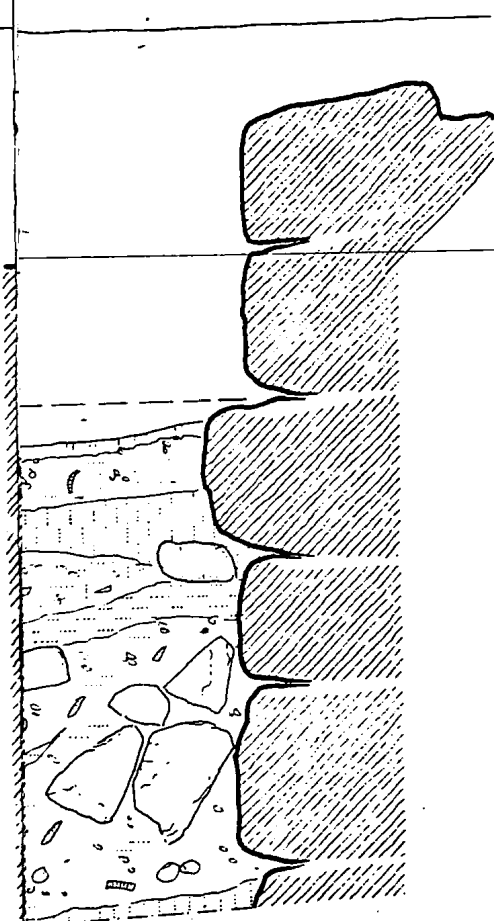
Σχ 28, 30





β



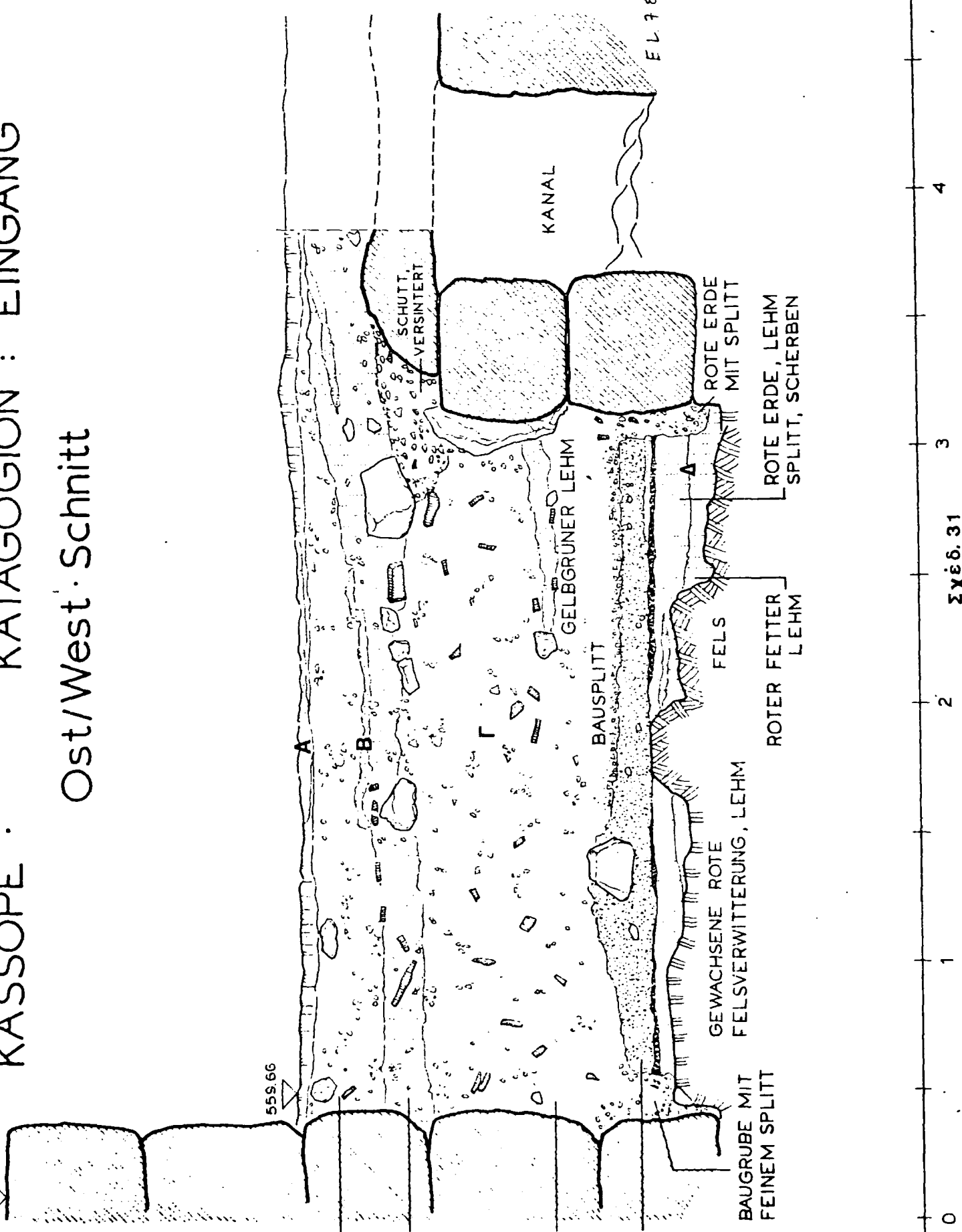


Schnittschema



KASSOPE · KATAGOION : EINGANG

Ost/West · Schnitt



559.66

SCHUTTAUFFÜLLUNG

DUNKELBRAUNE ERDE
MIT SPLITT UND ZIEGEL

SCHUTTAUFFÜLLUNG MIT
GRÖßEREN STEINEN
UND ZIEGELSTÜCKEN

GRAUER SCHUTT

SCHUTT,
VERSINTERT

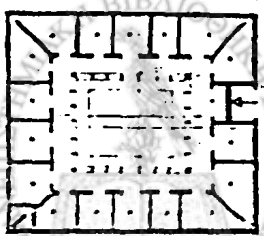
KANAL

GELBGRÜNER LEHM

BAUSPLITT

GEWACHSENE ROTE
FELSVERWITTERUNG, LEHM

BAUGRUBE MIT
FEINEM SPLITT



ROTE ERDE
MIT SPLITT

ROTE ERDE, LEHM
SPLITT, SCHERBEN

ROTER FETTER
LEHM

FELS

4

3

2

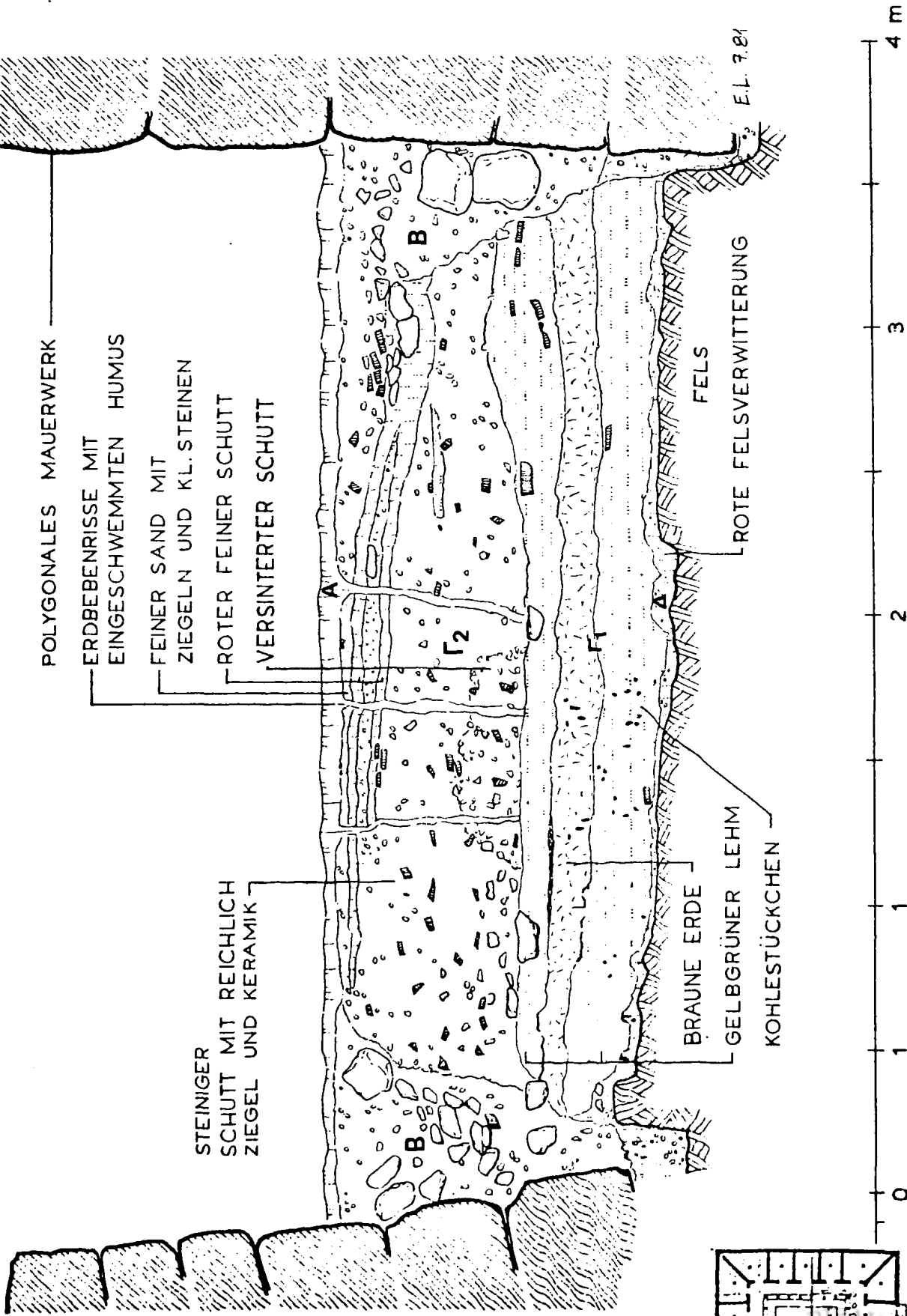
1

0

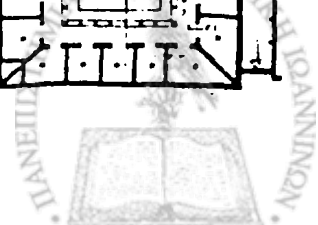
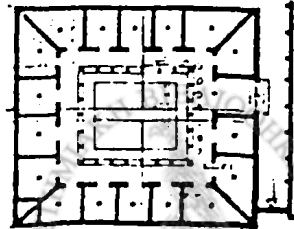
ΣΧΕΔ. 31

KASSOPE · Süd/Nord · Schnitt

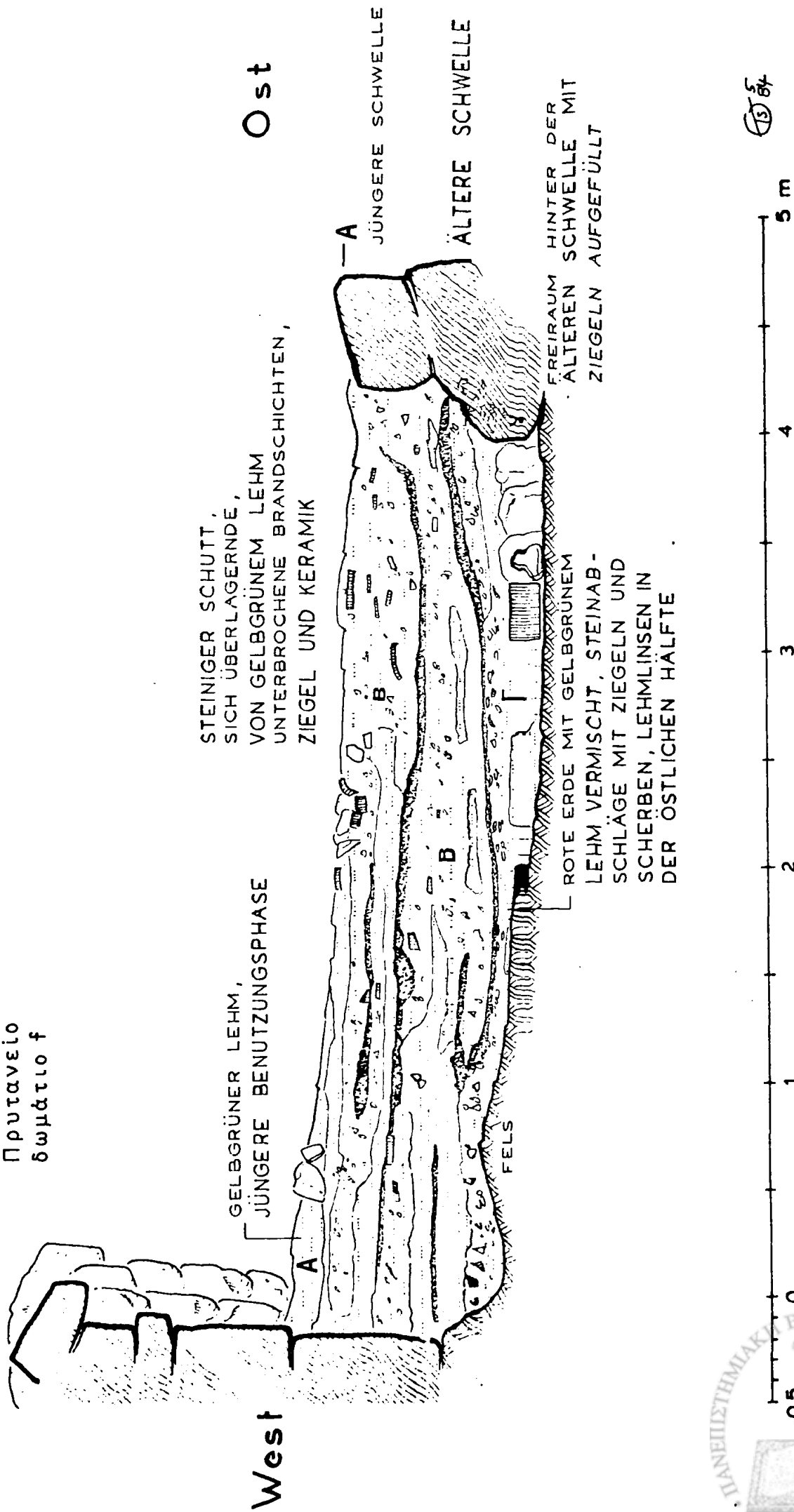
NORDSTOA / KATAGOION



ΣΧΕΔ. 32



ΚΑΣΣΩΠΗ
Πρυτανείο
δωμάτιο f



ΣΧΕΔ. 33

